

TACAN Z RWY 17R

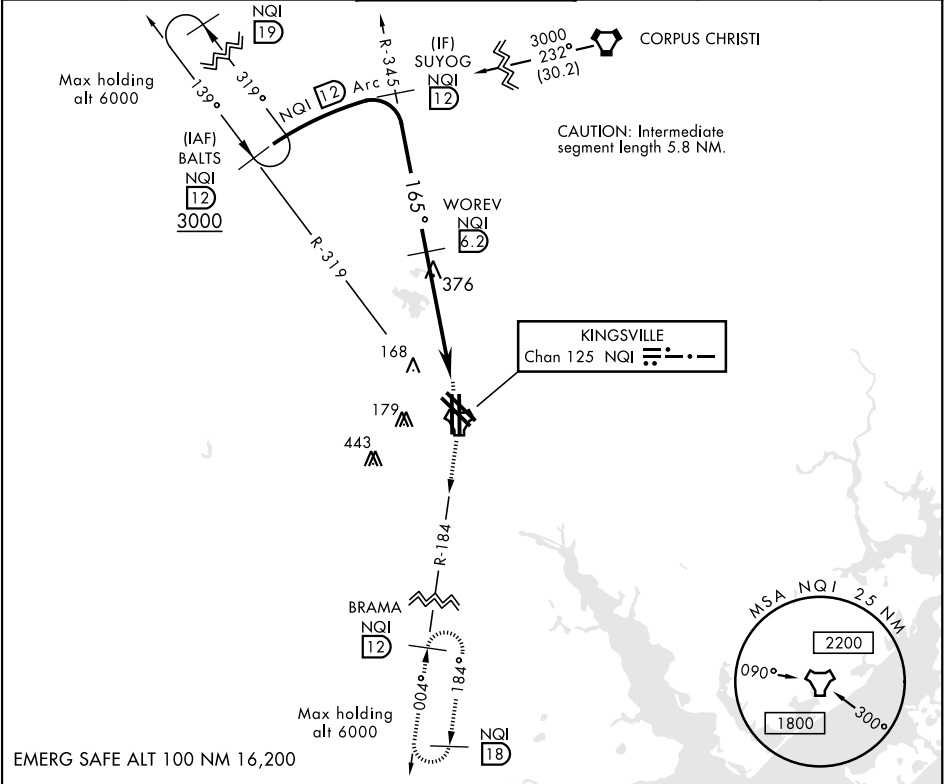
TACAN NQI	APCH CRS	Rwy Idg	8000
Chan 125	165°	TDZE	49
		Arprt Elev	50

AL-918 [USN]

KINGSVILLE NAS (KNQI)

ATIS ★ 276.2		KINGSVILLE APP CON 119.9 290.45		KINGSVILLE TOWER ★ 124.1 377.05	GND CON 239.05	CLNC DEL 328.4	ASR/PAR
-----------------	--	------------------------------------	--	------------------------------------	-------------------	-------------------	---------

MISSED APPROACH: Climb to 3000 direct NQI TACAN and climbing right turn to intercept NQI R-184 to BRAMA and hold.



				ELEV 50	TDZE 49	
				TWR 150	145	
CATEGORY	A	B	C	D		
S-17R	400-1	351	(400-1)			
CIRCLING	540-1	490 (500-1)	760-2 710 (800-2)	760-2 1/4 710 (800-2 1/4)	HIRL all Rwy TDZL/CL Rwy 17L	

TACAN Z RWY 17R

SC-3, 31 DEC 2020 to 28 JAN 2021

SC-3, 31 DEC 2020 to 28 JAN 2021