

## HI-ILS or LOC/DME RWY 13R

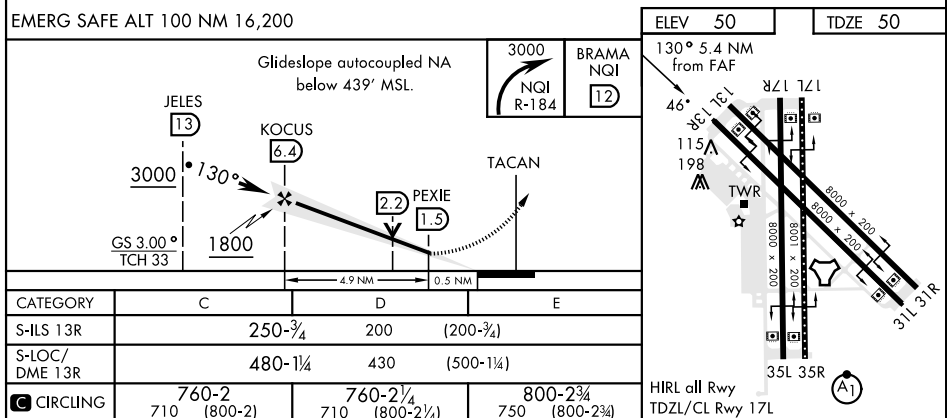
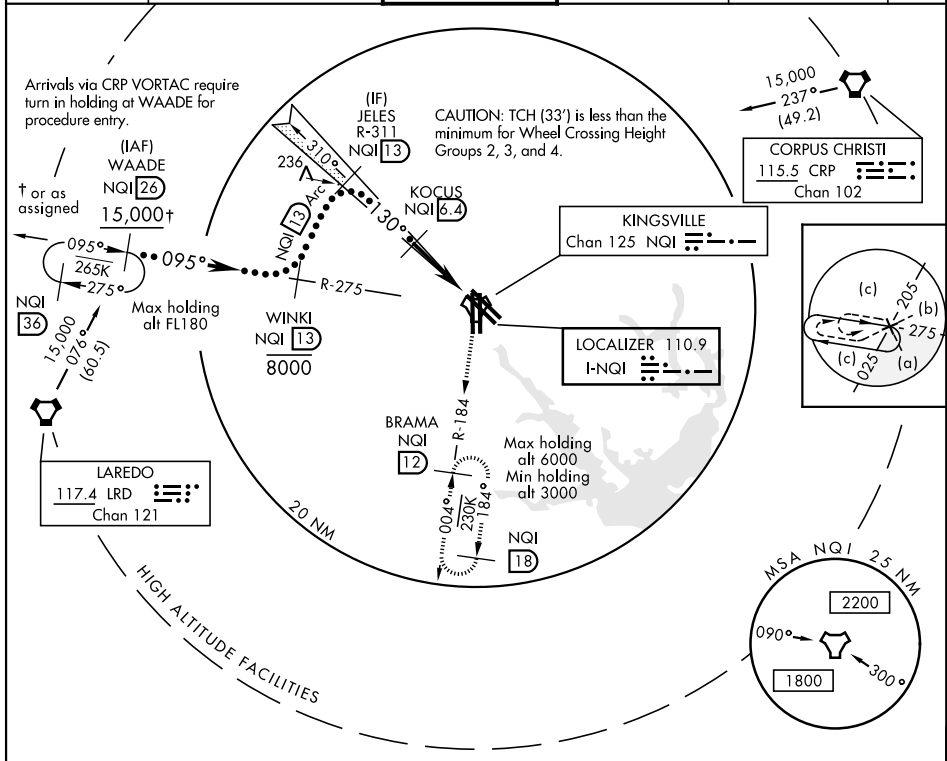
LOC I-NQI <b>110.9</b>	APCH CRS <b>130°</b>	Rwy Idg TDZE Arpt Elev <b>8000</b> <b>50</b> <b>50</b>
---------------------------	-------------------------	---

JAL-918 [UNJ]

KINGSVILLE NAS (KNQI)

MISSED APPROACH: Climbing right turn to 3000 to intercept NQI TACAN R-184 to BRAMA and hold.	
--	--

ATIS ★ <b>276.2</b>	KINGSVILLE APP CON <b>119.9 290.45</b>	KINGSVILLE TOWER ★ <b>124.1 377.05</b>	GND CON <b>239.05</b>	CLNC DEL <b>328.4</b>	ASR/ PAR
------------------------	---	---	--------------------------	--------------------------	-------------



KINGSVILLE, TEXAS

27°30'N-97°49'W

KINGSVILLE NAS (KNQI)

Amdt 1 05NOV20

## HI-ILS or LOC/DME RWY 13R

SC-3, 31 DEC 2020 to 28 JAN 2021

SC-3, 31 DEC 2020 to 28 JAN 2021