

COTULLA, TEXAS

AL-907 (FAA)

18032

WAAS CH <b>42836</b> <b>W31A</b>	APP CRS <b>309°</b>	Rwy Idg <b>6005</b> TDZE <b>464</b> Apt Elev <b>474</b>
--	------------------------	---

RNAV (GPS) RWY 31  
COTULLA-LA SALLE COUNTY (COT)

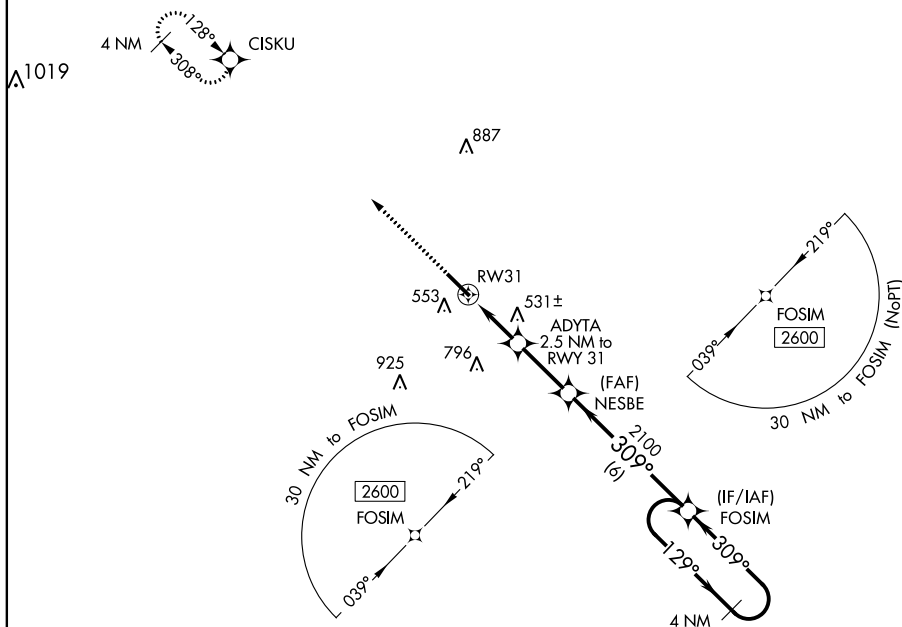
**T**

For uncompensated Baro-VNAV systems, LNAV/VNAV NA below -5°C (23°F) or above 54°C (130°F). DME/DME RNP-0.3 NA.

**MISSED APPROACH:** Climb to 2600 direct CISKU and hold.

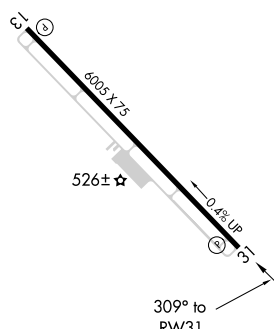
ASOS  
118,325

HOUSTON CENTER  
134.6 322.5

UNICOM  
122.7 (CTAF) **L**

ELEV 474

TDZE 464

MIRL Rwy 13-31 **L**

Amdt 2 18SEP14

28°27'N-99°13'W

COTULLA-LA SALLE COUNTY (COT)  
RNAV (GPS) RWY 31

**\*LNAV only.**

**CISKU**

**FOSIM**

**Holding Pattern**

**2600**

**2100**

**2600**

**129°**

**309°**

**309°**

**ADYTA**

**2.5 NM to RWY 31**

**\*1 NM to RWY 31**

**RW31**

**NESBE**

**2100**

**\*1280**

**GP 3.00°**

**TCH 45**

CATEGORY	A	B	C	D
LPV DA	714- $\frac{3}{4}$	250 (300- $\frac{3}{4}$ )		NA
LNAV/VNAV DA	714- $\frac{3}{4}$	250 (300- $\frac{3}{4}$ )		NA
LNAV MDA	800-1	336 (400-1)		NA
<b>CIRCLING</b>	920-1 446 (500-1)	940-1 466 (500-1)	1120-1 $\frac{3}{4}$ 646 (700-1 $\frac{3}{4}$ )	NA

SC-3, 31 DEC 2020 to 28 JAN 2021