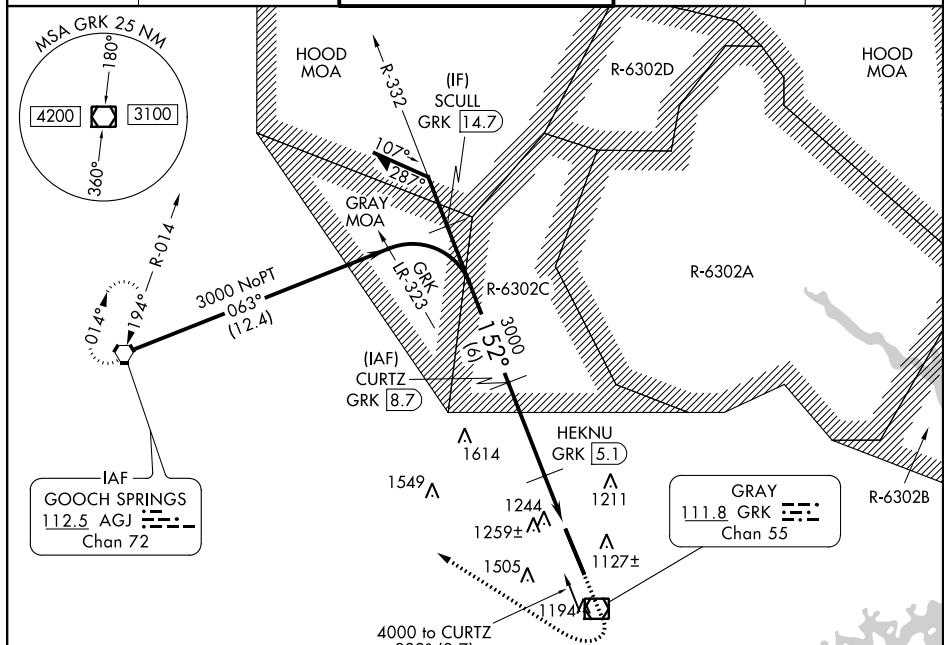


VOR/DME RWY 15
ROBERT GRAY AAF (GRK)

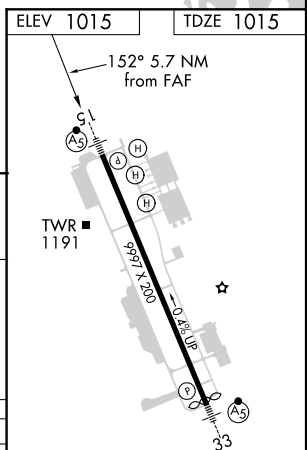
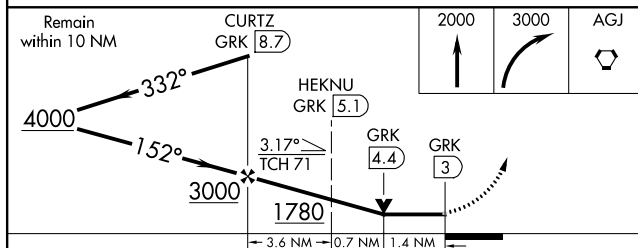
MALSR


MISSED APPROACH: Climb to 2000 then climbing right turn to 3000 direct AGL VORTAC and hold

ATIS 124.9	GRAY APP CON 120.075 323.15	GRAY TOWER 120.75 285.5	GND CON 121.8 279.5	CLNC DEL 126.2 251.1
---------------	--------------------------------	----------------------------	------------------------	-------------------------

 $\Delta 1616 \pm$

Cat E procedure turn not authorized.



CATEGORY	A	B	C	D	E
S-15	1520/24	505 (600-½)	1520/50	505 (600-1)	1520/60 505 (600-¼)
 CIRCLING	1540-1	525 (600-1)	1560-1½ 545 (600-½)	1620-2 605 (700-2)	1740-2½ 725 (800-2)

HIRL Rwy 15-33

SC-3, 31 DEC 2020 to 28 JAN 2021