

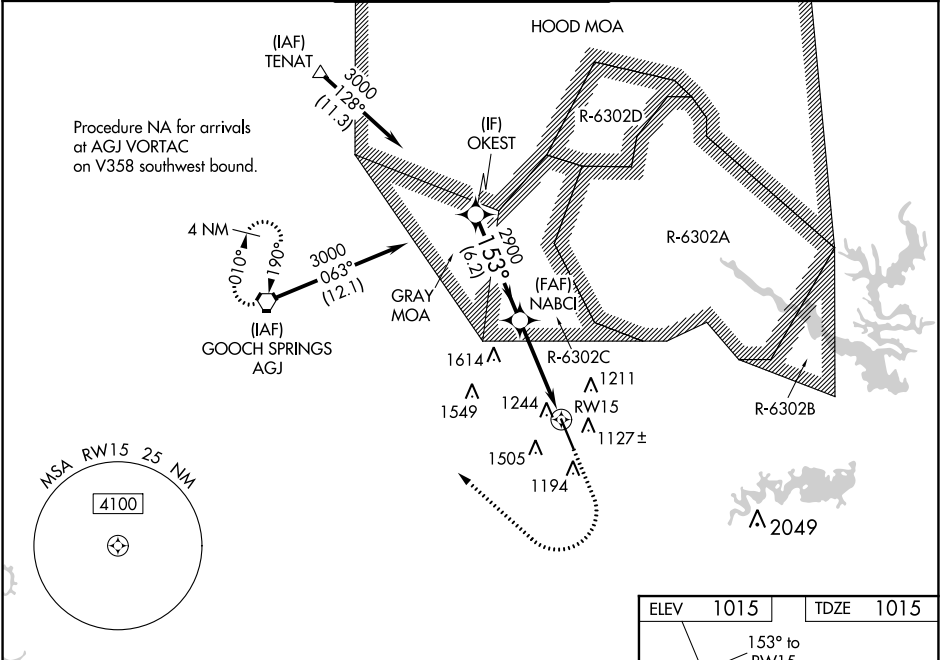
WAAS CH 78099 W15A	APP CRS 153°	Rwy Idg TDZE Apt Elev	9997 1015 1015
--	------------------------	-----------------------------	---

RNAV (GPS) RWY 15

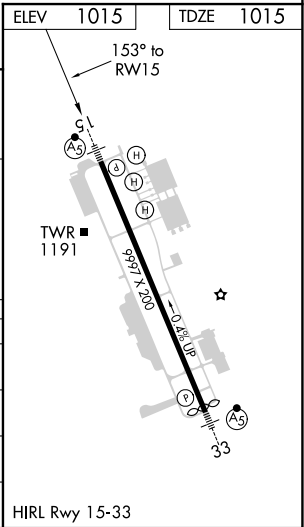
ROBERT GRAY AAF (GRK)

<div><div>▼</div><div>▲</div><div>ASR/PAR</div></div>	For uncompensated Baro-VNAV systems, LNAV/VNAV NA below -17°C (2°F) or above 54°C (130°F). Circling NA west of Rwy 15-33. DME/DME RNP-0.3 NA. For inop ALS, increase LPV Cat E visibility to RVR 4000, LNAV/VNAV all Cats visibility to 1 3⁄8 SM and LNAV Cats C/D/E visibility to 1 3⁄8 SM. # RVR 1800 authorized with the use of FD or AP or HUD to DA.	MALSR <div><div><div>AS</div><div> </div></div></div>	MISSED APPROACH: Climb to 2000 then climbing right turn to 3000 direct AGJ VORTAC and hold.
---	--	---	---

ATIS 124.9	GRAY APP CON 120.075 323.15	GRAY TOWER 120.75 285.5	GND CON 121.8 279.5	CLNC DEL 126.2 251.1
----------------------	---------------------------------------	-----------------------------------	-------------------------------	--------------------------------



VGSI and RNAV glidepath not coincident (VGSI Angle 3.00/TCH 53).					
<div><div>OKEST</div><div>3000</div><div>153°</div><div>NABCI</div><div>2900</div><div>2900</div><div>2900</div><div>1.4 NM to RW15</div><div>RW15</div><div>GP 3.00° TCH 53</div><div>6.2 NM</div><div>4.4 NM</div><div>1.4 NM</div></div>					
*LNAV only.					
CATEGORY	A	B	C	D	E
LPV DA #	1215/24 200 (200-½)				
LNAV/VNAV DA	1531/55 516 (600-1)				
LNAV MDA	1520/24	505 (600-½)	1520/55	505 (600-1)	
CIRCLING	1540-1	525 (600-1)	1560-1½ 545 (600-1½)	1620-2 605 (700-2)	1740-2½ 725 (800-2½)



SC-3, 31 DEC 2020 to 28 JAN 2021

SC-3, 31 DEC 2020 to 28 JAN 2021