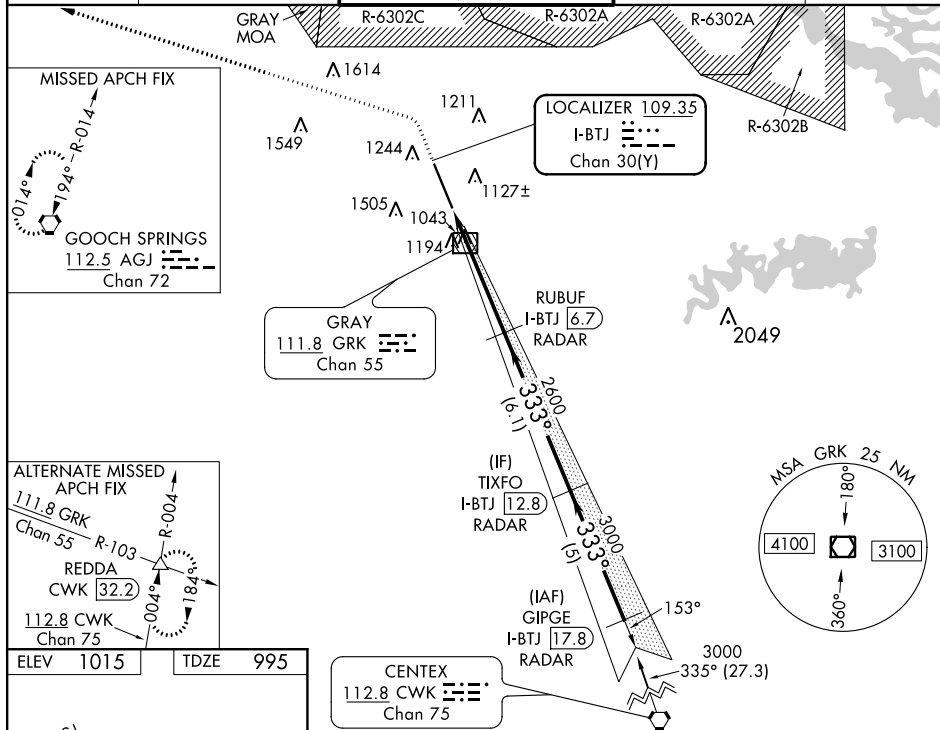




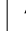
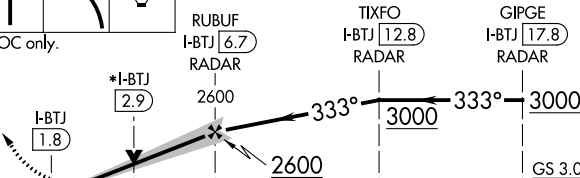

ILS or LOC RWY 33  
ROBERT GRAY AAF (GRK)

MALSR

**MISSED APPROACH:** Climb to 2000 then climbing left turn to 3000 direct AGJ VORTAC and hold.

**T** Circling NA west of Rwy 15-33. For inop ALS, increase S-ILS 33  
**A** Cat E visibility to  $\frac{3}{4}$  SM and S-LOC 33 Cat C/D/E visibility to 1 SM.  
 ASR/PAR



|  |   |   |                               |                       |                               |  |
|--|---|---|-------------------------------|-----------------------|-------------------------------|--|
|           |  |  |                               |                       |                               |  |
| *LOC only.   |   |   |                               |                       |                               |  |
|           |   |   |                               |                       |                               |  |
| CATEGORY   | A   | B   | C                             | D                     | E                             |  |
| S-ILS 33   | 1195-1/2 200 (200-1/2)  |   |                               |                       |                               |  |
| S-LOC 33   | 1360-1/2  | 365 (400-1/2)   | 1360-3/4 365 (400-3/4)        |                       |                               |  |
|  CIRCLING | 1540-1  | 525 (600-1)   | 1560-1 1/2<br>545 (600-1 1/2) | 1620-2<br>605 (700-2) | 1740-2 1/2<br>725 (800-2 1/2) |  |