

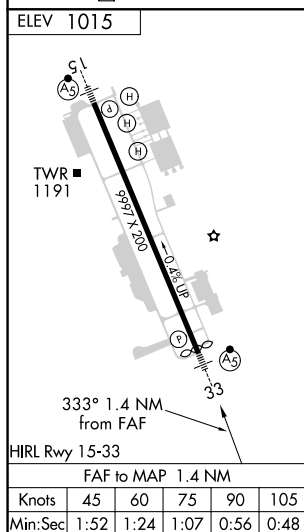
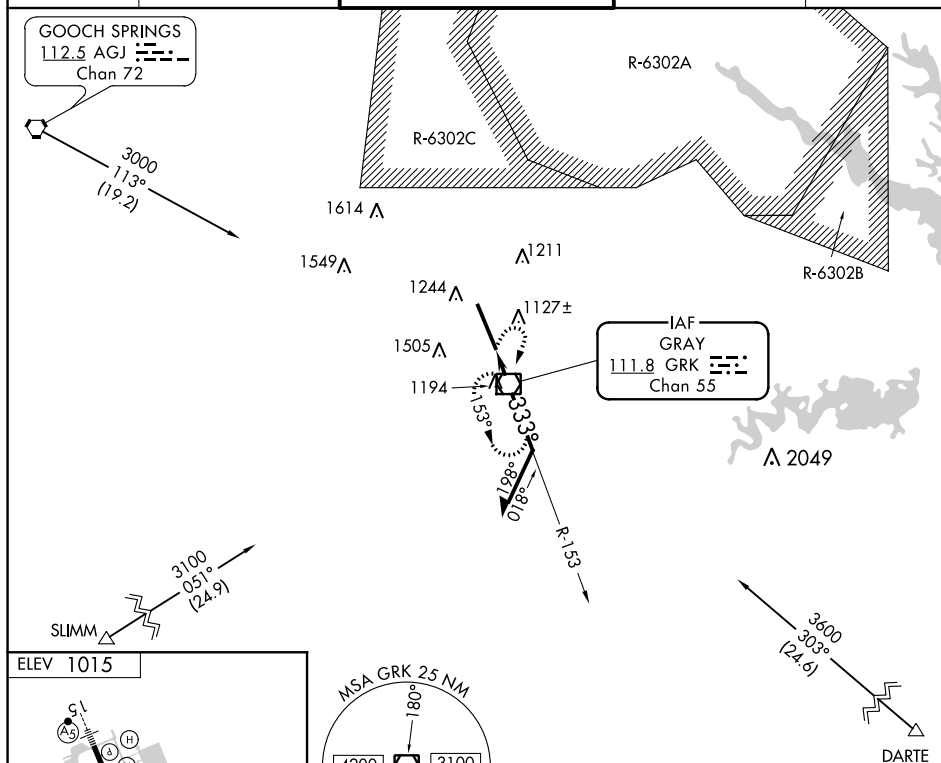

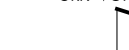




VOR/DME GRK <b><u>111.8</u></b> Chan <b>55</b>	APP CRS <b>333°</b>	Rwy Idg <b>9803</b> TDZE <b>N/A</b> Apt Elev <b>1015</b>
--	------------------------	--

# COPTER VOR RWY 33

 NA ASR/PAR			MISSED APPROACH: Climbing right turn to 3000 direct GRK VOR/DME and hold.	
ATIS <b>124.9</b>	GRAY APP CON <b>120.075 323.15</b>	GRAY TOWER <b>120.75 285.5</b>		GND CON <b>121.8 279.5</b>
		CLNC DEL <b>126.2 251.1</b>		



	<p>GRK VOR/DME</p>  <p>153°</p> <p>3000</p> <p>Remain within 5 NM</p>
	<p>GRK (1.4)</p>  <p>6.49°</p> <p>TCH 52</p> <p>2000</p> <p>VGSI and descent angles not coincident (VGSI Angle 3.00/TCH 50).</p>
<p>CATEGORY</p>	<p>COPTER</p>
<p>H-33</p>	<p>1460-<math>\frac{1}{4}</math> 465 (500-<math>\frac{1}{4}</math>)</p>