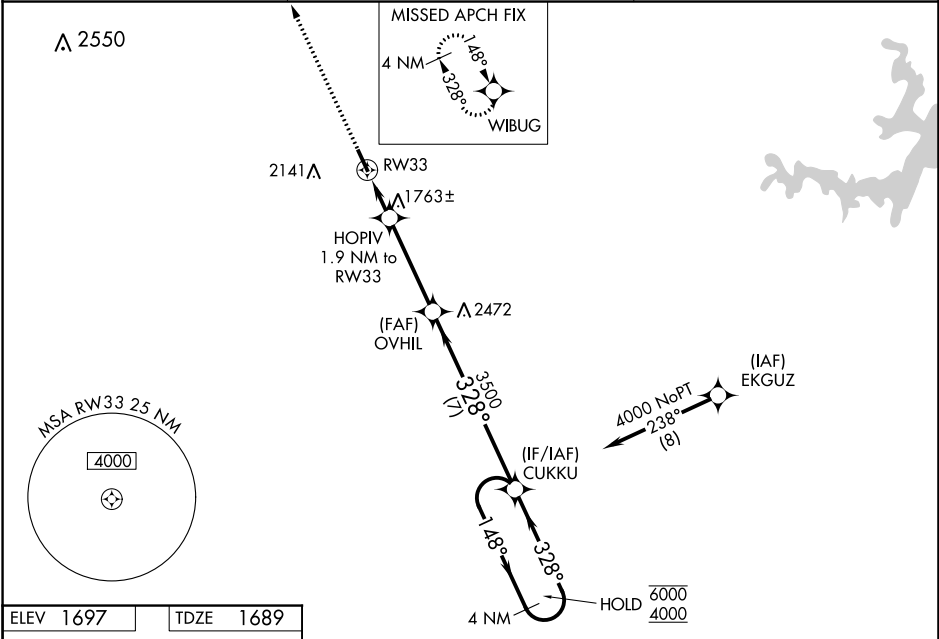


WAAS CH <b>82034</b> <b>W33A</b>	APP CRS <b>328°</b>	Rwy Idg TDZE <b>1689</b> Apt Elev <b>1697</b>
--	------------------------	---

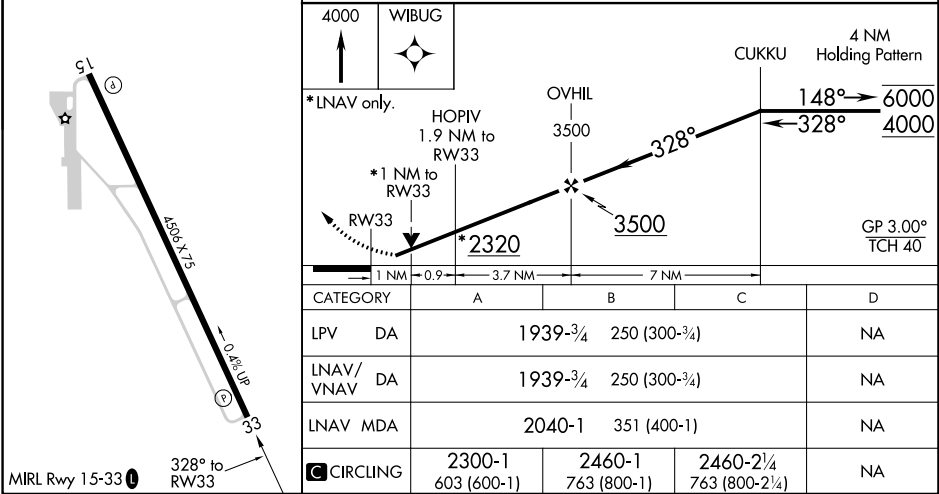
RNAV (GPS) RWY 33  
COLEMAN MUNI (COM)

RNP APCH. ▼ Rwy 33 helicopter visibility reduction below ¾ SM NA. ▲ For uncompensated Baro-VNAV systems, LNAV/VNAV NA below -18°C or above 54°C.	MISSED APPROACH: Climb to 4000 direct WIBUG and hold.
--	---

AWOS-3PT <b>119.1</b>	FORT WORTH CENTER <b>127.45 290.3</b>	UNICOM <b>122.8 (CTAF) 0</b>
--------------------------	--	---------------------------------



ELEV <b>1697</b>	TDZE <b>1689</b>
------------------	------------------



CATEGORY	A	B	C	D
LPV DA	1939-¾	250 (300-¾)		NA
LNAV/VNAV DA	1939-¾	250 (300-¾)		NA
LNAV MDA	2040-1	351 (400-1)		NA
CIRCLING	2300-1 603 (600-1)	2460-1 763 (800-1)	2460-2¼ 763 (800-2¼)	NA