

WAAS CH 50131 W17A	APP CRS 176°	Rwy Idg 8301 TDZE 35 Apt Elev 36
--	------------------------	---

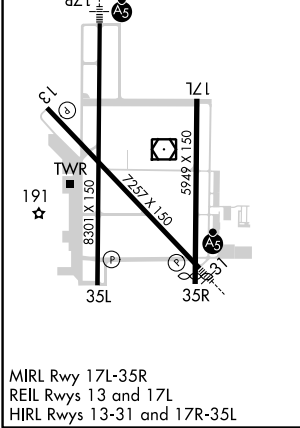
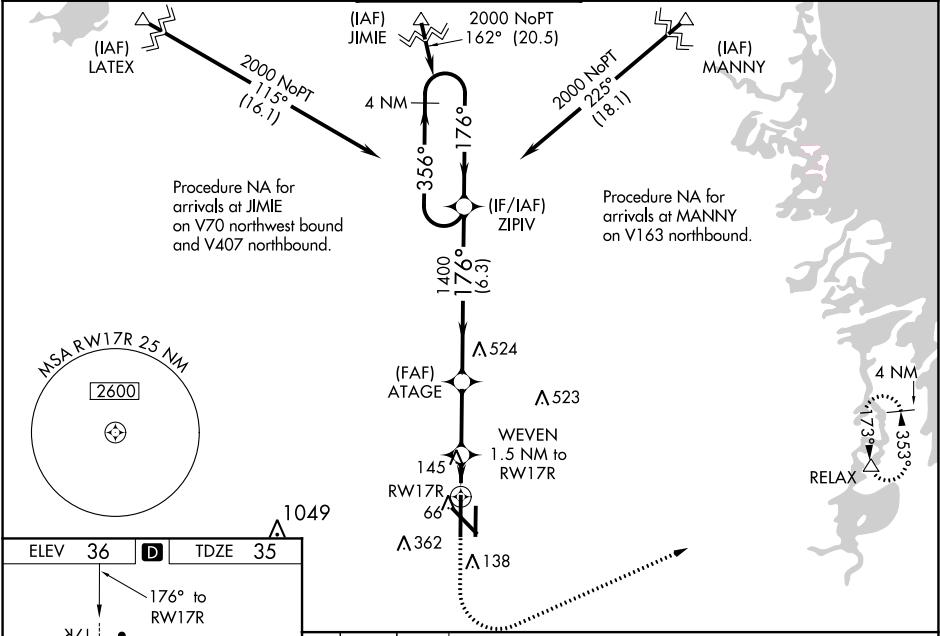
RNAV (GPS) Y RWY 17R
VALLEY INTL (HRL)

⚠ For uncompensated Baro-VNAV systems, LNAV/VNAV NA below 2°C (36°F) or above 54°C (130°F). DME/DME RNP-0.3 NA. When local altimeter setting not received, use Port Isabel altimeter setting: increase LPV DA to 277 feet; increase LNAV/VNAV DA to 327 feet; increase all MDAs 60 feet and visibility Cats C and D ¼ SM. For inoperative MALSR, increase LNAV/VNAV all Cats visibility to RVR 4000, LNAV all Cats visibility to RVR 5500. For inoperative MALSR, when using Port Isabel altimeter setting, increase LNAV/VNAV all Cats visibility to RVR 4500, LNAV Cats A and B visibility to RVR 5500 and Cats C and D visibility to 1¼ mile. Baro-VNAV NA with Port Isabel altimeter setting. VDP NA with Port Isabel altimeter setting. **RVR 1800 authorized with use of FD or AP or HUD to DA, NA when using Port Isabel altimeter setting.

MALSR

MISSED APPROACH:
Climb to 500 then climbing left turn to 2000 direct RELAX and hold

ATIS 124.85	VALLEY APP CON 120.7 279.5	HARLINGEN TOWER★ 119.3 (CTAF) 0 317.6	GND CON 121.7	UNICOM 122.95
-----------------------	--------------------------------------	---	-------------------------	-------------------------



500	2000	RELAX	WEVEN 1.5 NM to RW17R	ATAGE 1400	ZIPIV 4 NM Holding Pattern	356° → 2000	GP 3.00° TCH 55
*LNAV only. *1 NM to RW17R							
*560							
1 NM 0.5 2.6 NM 6.3 NM							
CATEGORY	A		B		C		D
LPV DA **	235/24		200 (200-½)				
LNAV/VNAV DA	285/24		250 (300-½)				
LNAV MDA	400/24 365 (400-½)		400/35 365 (400-¾)				
CIRCLING	500-1 464 (500-1)		560-1 524 (600-1)		680-1¾ 644 (700-1¾)		680-2 644 (700-2)

SC-3, 31 DEC 2020 to 28 JAN 2021

SC-3, 31 DEC 2020 to 28 JAN 2021