

APP CRS	Rwy Idg	<b>7257</b>
<b>311°</b>	TDZE	<b>36</b>
	Apt Elev	<b>36</b>

RNAV (RNP) Z RWY 31  
VALLEY INTL (HRL)

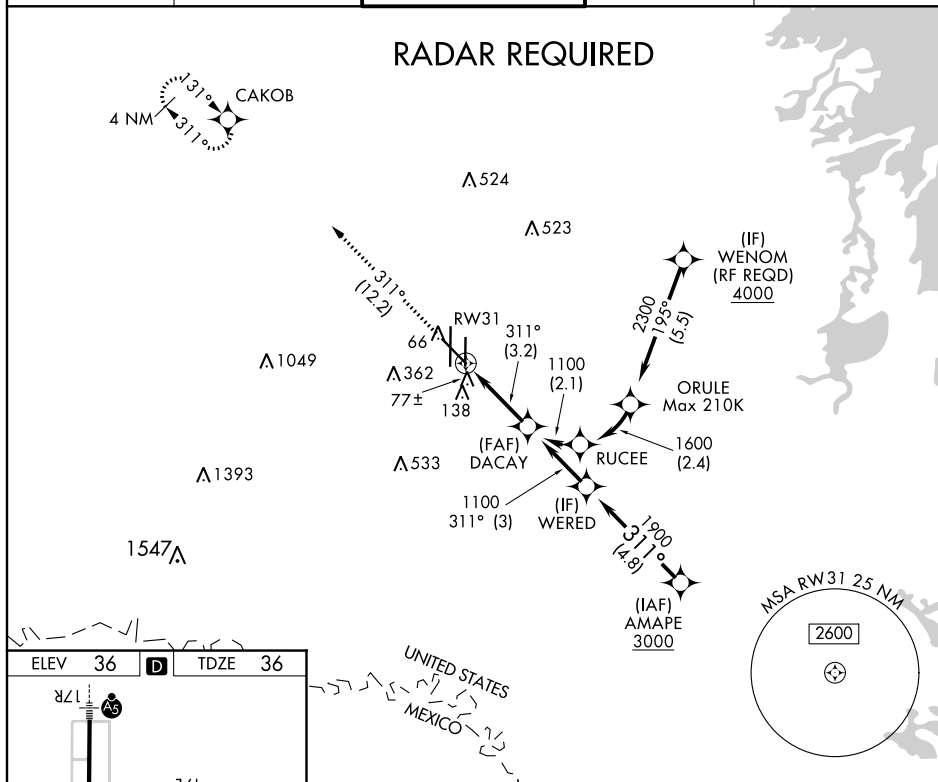
**T** For uncompensated Baro-VNAV systems, procedure NA below 2°C (36°F) or above 54°C (130°F). GPS Required. For inop ALS, increase RNP 0.17 all Cats visibility to ¾ SM, and RNP 0.30 all Cats visibility 1 SM.



**MISSED APPROACH:** Climb to 2000 on track 311° to CAKOB and hold.

ATIS 124.85	VALLEY APP CON 120.7 279.5	HARLINGEN TOWER ★ 119.3 (CTAF) 0 317.6	GND CON 121.7	UNICOM 122.95
----------------	-------------------------------	---	------------------	------------------

## RADAR REQUIRED

[illegible]

MIRL Rwy 17L-35R  
REIL Rwy 13 and 17L  
HIRL Rwy 13-31 and 17R-35L

See Planview for multiple IF locations.

2000  
↑  
tr  
311°  
CAKOB

RW31

311°

3.2 NM

DACAY  
1100

1100

GP 3.00°  
TCH 55

CATEGORY	A	B	C	D
RNP 0.17 DA		310- $\frac{1}{2}$	274 (300- $\frac{1}{2}$ )	
RNP 0.30 DA		360- $\frac{5}{8}$	324 (400- $\frac{5}{8}$ )	

## AUTHORIZATION REQUIRED