
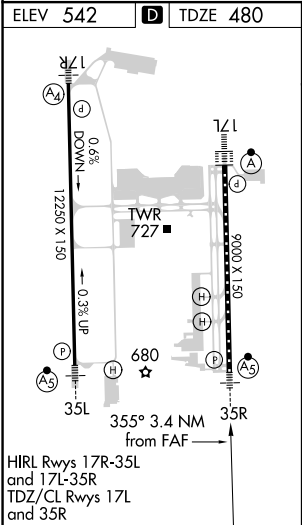
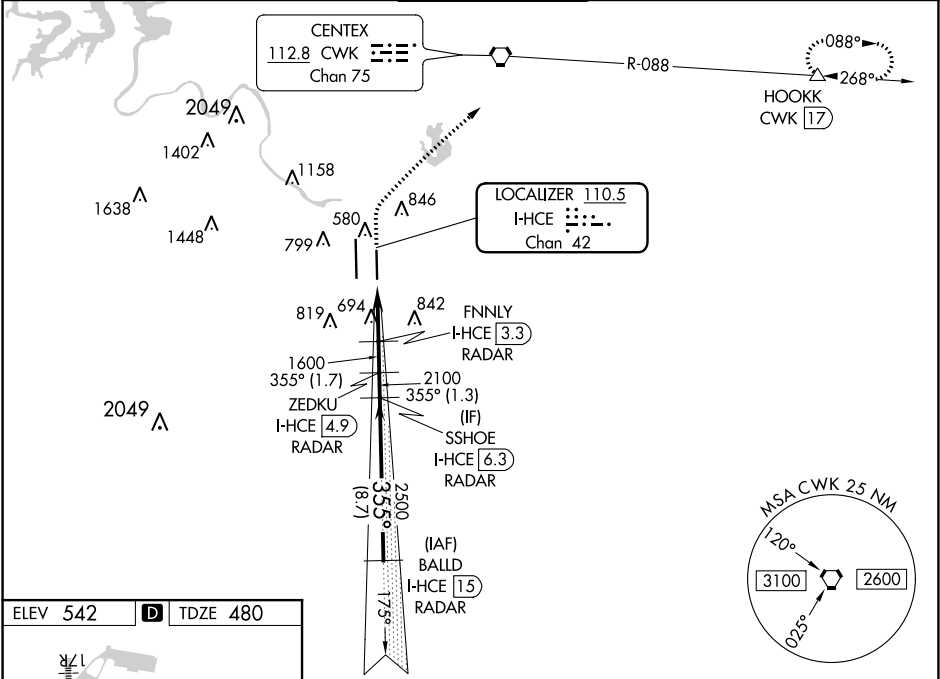


LOC/DME I-HCE 110.5 Chan 42	APP CRS 355°	Rwy Idg TDZE Apt Elev	9000 480 542
---	------------------------	-----------------------------	---

ILS or LOC RWY 35R
AUSTIN-BERGSTROM INTL (AUS)

DME required. RADAR required for procedure entry.			MALSR 	MISSED APPROACH: Climb to 1000 then climbing right turn to 3000 on heading 030° and CWK VORTAC R-088 to HOOKK/CWK 17 DME and hold.		
<div>⚠ Simultaneous approach authorized.</div> <div>⚠ For inop ALS, increase S-ILS 35R Cat E visibility to RVR 4000, S-LOC 35R Cats C/D/E visibility to 1½ SM.</div>						
D-ATIS 124.4	AUSTIN APP CON 127.225 317.65 (EAST) 120.875 270.25 (SOUTH) 119.0 370.85 (WEST)	AUSTIN TOWER 121.0 281.5	GND CON 121.9 348.6	CLNC DEL 125.5 263.0	CPDLC	



1000	3000	CWK R-088	HOOKK	VGSI and ILS glidepath not coincident (VGSI Angle 3.00°/TCH 59°).	
				ZEDKU I-HCE [4.9] RADAR	BALLD I-HCE [15] RADAR
*LOC only.		I-HCE DME ANTENNA	FNNLY I-HCE [3.3] RADAR	SSHORE I-HCE [6.3] RADAR	
					GS 3.00° TCH 52
1.5 NM		1.9 NM	1.7 NM	1.3 NM	8.7 NM
CATEGORY	A	B	C	D	E
S-ILS 35R	680/18 200 (200-½)				
S-LOC 35R	1000/24	520 (500-½)	1000/55 520 (500-1)		
CIRCLING	1040-1 498 (500-1)	1100-1 558 (600-1)	1200-1¾ 658 (700-1¾)	1200-2 658 (700-2)	1520-3 978 (1000-3)

SC-3, 31 DEC 2020 to 28 JAN 2021

SC-3, 31 DEC 2020 to 28 JAN 2021