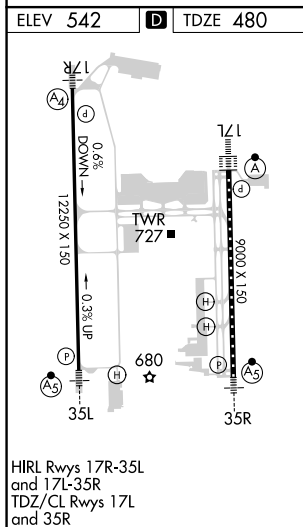
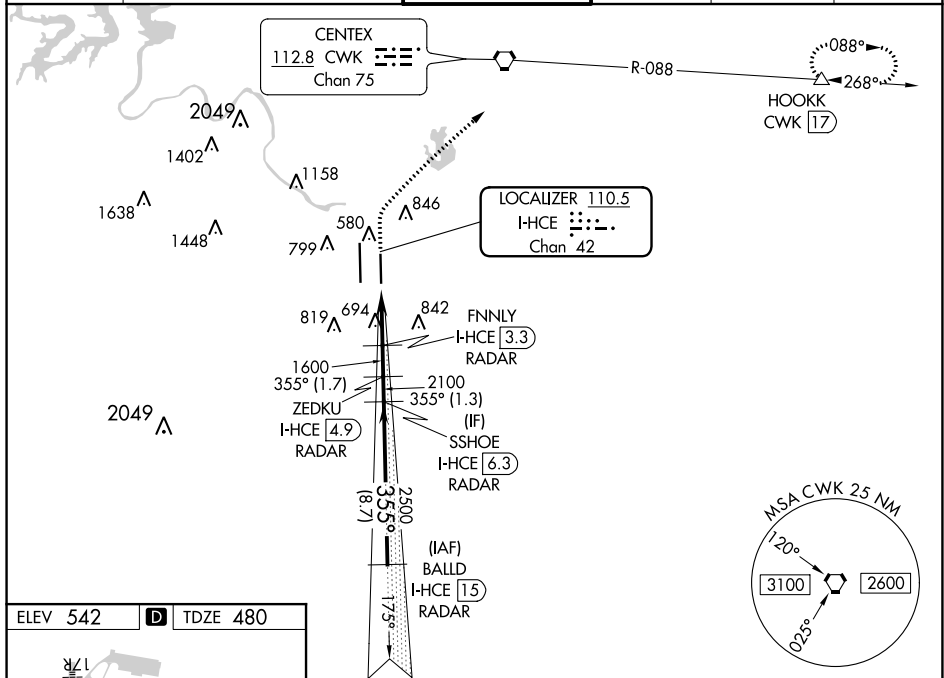


**ILS RWY 35R (SA CAT I & II)**  
AUSTIN-BERGSTROM INTL (AUS)

MALSR  
A5

**MISSED APPROACH:** Climb to 1000 then climbing right turn to 3000 on heading 030° and CWK VORTAC R-088 to HOOKK/CWK 17 DME and hold.

D-ATIS	AUSTIN APP CON	AUSTIN TOWER	GND CON	CLNC DEL	CPDLC
124.4	127.225 317.65 (EAST) 120.875 270.25 (SOUTH) 119.0 370.85 (WEST)	121.0 281.5	121.9 348.6	125.5 263.0	



1000 ↑	3000 hdg 030°	CWK R-088	HOOKK △	VGS1 and ILS glidepath not coincident (VGS1 Angle 3.00/TCH 59).				SSHOE I-HCE 6.3	BALLD I-HCE 15 RADAR
<p>I-HCE DME ANTENNA</p> <p>FNNLY I-HCE 3.3 RADAR</p> <p>I-HCE 3.3 RADAR</p> <p>ZEDKU I-HCE 4.9 RADAR</p> <p>SSHOE I-HCE 6.3 RADAR</p> <p>BALLD I-HCE 15 RADAR</p> <p>1600</p> <p>1600</p> <p>2100</p> <p>2500</p> <p>355°</p> <p>4000</p> <p>GS 3.00° TCH 52</p> <p>0.961</p> <p>3.4 NM</p> <p>1.7 NM</p> <p>1.3 NM</p> <p>8.7 NM</p>									
CATEGORY		A		B		C		D	
S-ILS 35R				SA CAT I		RA 235/14		150 DA 630	
S-ILS 35R				SA CAT II		RA 110/12		100 DA 580	

SA CATEGORY I & II ILS - SPECIAL AIRCREW  
& AIRCRAFT CERTIFICATION REQUIRED

SC-3, 31 DEC 2020 to 28 JAN 2021