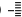
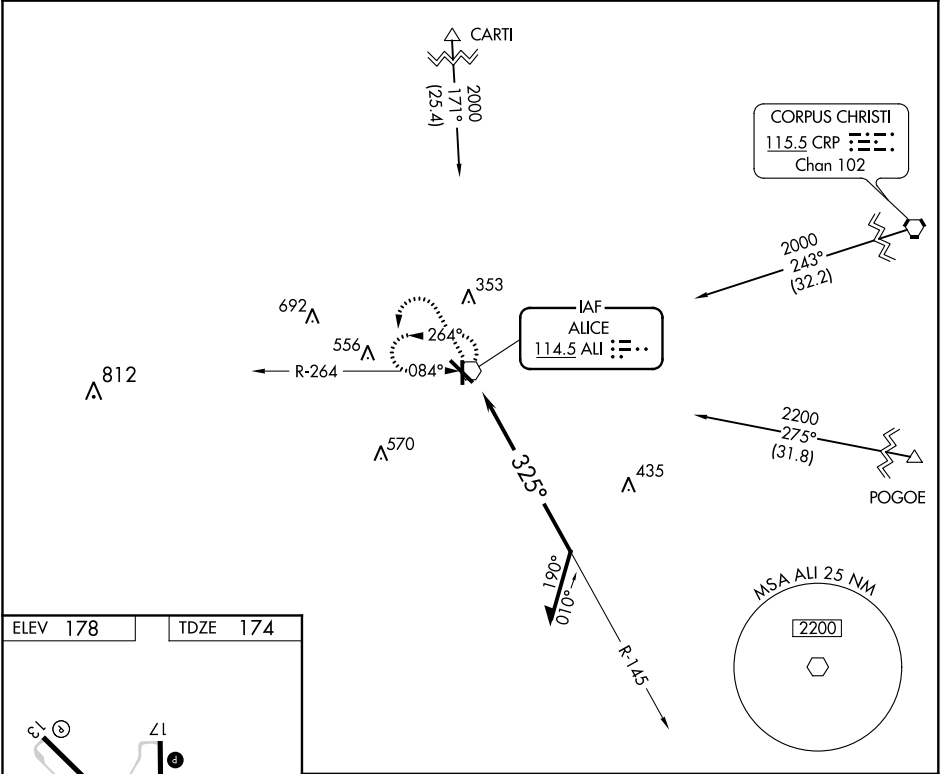


VOR ALI 114.5	APP CRS 325°	Rwy Idg TDZE Apt Elev	5997 174 178
-------------------------	------------------------	-----------------------------	---

VOR RWY 31
ALICE INTL (ALI)

<p>⚠ When local altimeter setting not received, use Nueces County altimeter setting: increase all MDAs 60 feet and visibility S-31 Cats C and D ¼ mile. Visibility reduction by helicopters NA. For inop ALS when using Nueces County altimeter setting, increase S-31 Cats C, D visibility to 1 ½ SM. For inop ALS, increase S-31 Cats C, D visibility to 1 ½ SM.</p>	<p>MALS</p> <p>⚠ </p>	<p>MISSED APPROACH: Climb to 1500 then climbing left turn to 2000 direct ALI VOR and hold.</p>
---	---	--

ASOS 119.225	KINGSVILLE APP CON ★ 119.9 290.45	UNICOM 123.0 (CTAF) 0
------------------------	---	---------------------------------



ELEV 178	TDZE 174	1500	2000	ALI	ALI VOR	Remain within 10 NM
CATEGORY	A	B	C	D		
S-31	620-3/4	446 (500-3/4)	620-1	446 (500-1)		
CIRCLING	620-1	640-1	660-1 1/2	740-2		
	442 (500-1)	462 (500-1)	482 (500-1 1/2)	562 (600-2)		