


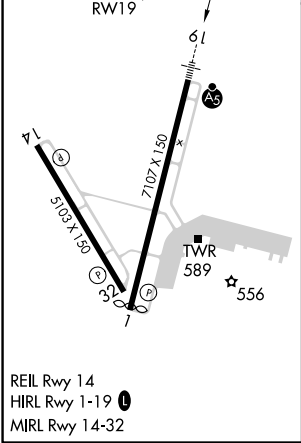
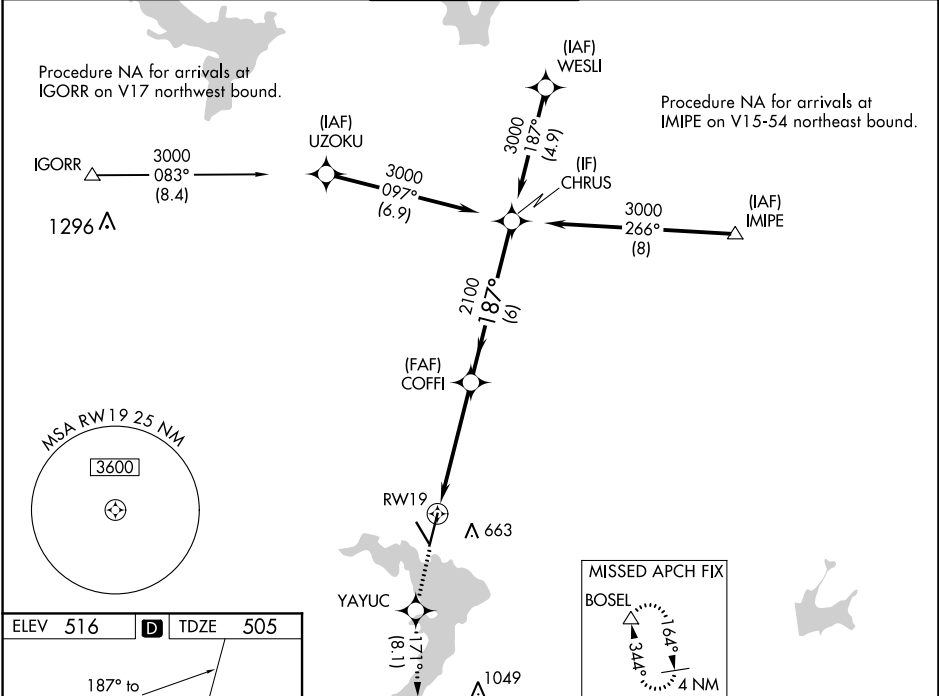
WAAS CH 82119 W19A	APP CRS 187°	Rwy Idg 6605 TDZE 505 Apt Elev 516
--	------------------------	---

RNAV (GPS) RWY 19

WACO RGNL (ACT)

RNP APCH.	MALSR 	MISSED APPROACH: Climb to 4000 direct YAYUC and on track 171° to BOSEL and hold, continue climb-in-hold to 4000.
For uncompensated Baro-VNAV systems, LNAV/VNAV NA below -8°C or above 54°C. For inop ALS, increase LNAV/VNAV visibility all Cats to RVR 4000. ASR **RVR 1800 authorized with use of FD or AP or HUD to DA.		

ATIS 123.85	WACO APP CON ★ 127.65 227.125	WACO TOWER ★ 119.3 (CTAF) 0 257.8	GND CON 121.9	UNICOM 122.95
-----------------------	---	---	-------------------------	-------------------------



4000	YAYUC	tr 171°	BOSEL	
*LNAV only.				
		*1.1 NM to RW19		
			COFFI	CHRUS
			2100	3000
				GP 3.00° TCH 55
CATEGORY	A	B	C	D
LPV DA**	705/24 200 (200-½)			
LNAV/VNAV DA	755/24 250 (300-½)			
LNAV MDA	900/24	395 (400-½)	900/35	395 (400-¾)
CIRCLING	940-1 424 (500-1)	980-1 464 (500-1)	1020-1½ 504 (600-1½)	1160-2 644 (700-2)