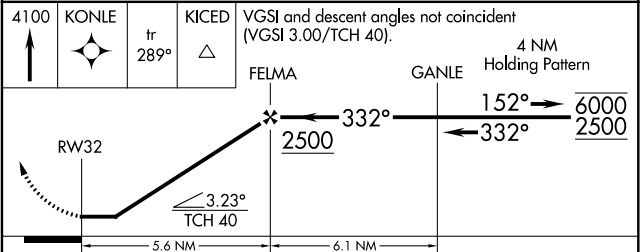
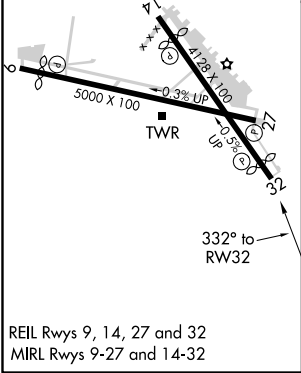
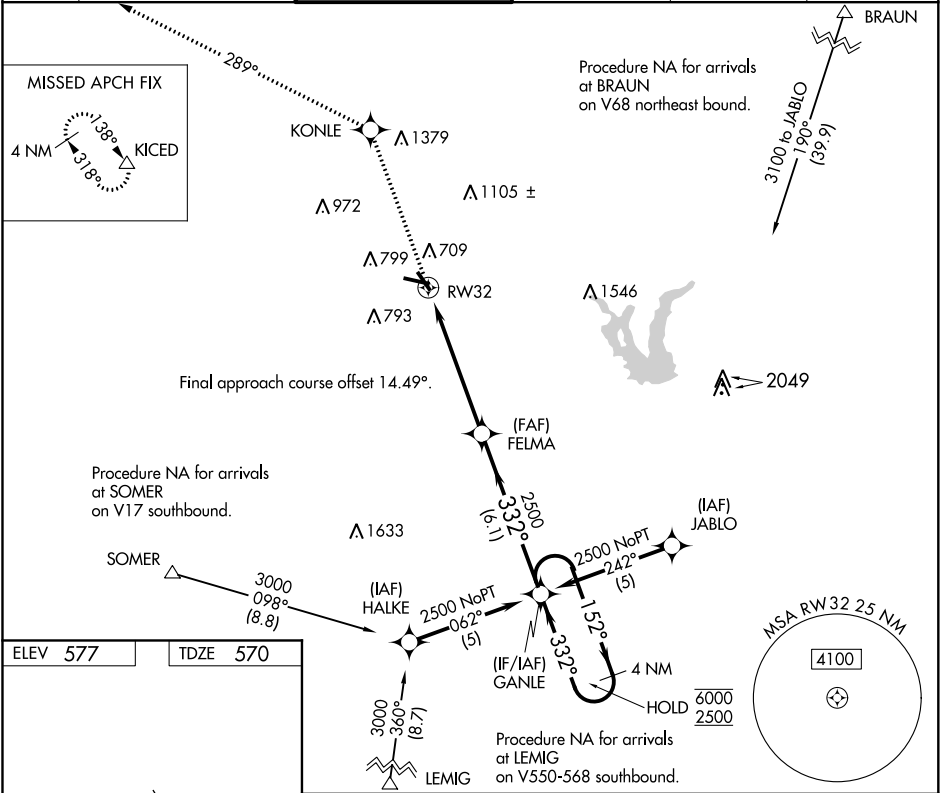


APP CRS	Rwy Idg	3756
332°	TDZE	570
	Apt Elev	577

RNAV (GPS) RWY 32
STINSON MUNI (SSF)

RNP APCH.	MISSED APPROACH: Climb to 4100 direct KONLE and on track 289° to KICED and hold.
Rwy 32 helicopter visibility reduction below 1 SM NA. Straight-in Rwy 32 NA at night, Circling Rwy 9, 32 NA at night.	

ATIS	SAN ANTONIO APP CON	STINSON TOWER ★	GND CON	CLNC DEL	UNICOM
128.8	125.7 290.225	118.2 (CTAF) 379.9	121.7 379.9	121.7	122.95



CATEGORY	A	B	C	D
LNAV MDA	1020-1	450 (500-1)	1020-1 3/8 450 (500-1 3/8)	NA
CIRCLING	1040-1 463 (500-1)	1100-1 523 (600-1)	1100-1 1/2 523 (600-1 1/2)	NA

SC-3, 31 DEC 2020 to 28 JAN 2021

SC-3, 31 DEC 2020 to 28 JAN 2021