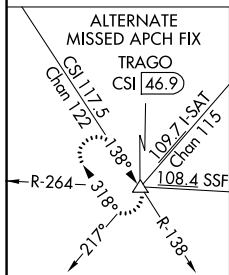


ILS RWY 13R (CAT II)
SAN ANTONIO INTL (SAT)



MISSED APPROACH: Climb to 3100 on heading 128° and SAT VORTAC R-160 to EMBOW INT and hold.

[illegible]

CATEGORY II ILS - SPECIAL AIRCREW & AIRCRAFT CERTIFICATION REQUIRED

SC-3, 31 DEC 2020 to 28 JAN 2021