

(BOWIE7.BOWIE) 20254

AL-369 (FAA)

BOWIE SEVEN DEPARTURE

SAN ANTONIO INTL (SAT)
SAN ANTONIO, TEXAS

D-ATIS
118.9
CLNC DEL
126.7
CPDLC
GND CON
121.9 348.6
SAN ANTONIO DEP CON
125.7 290.225 (Rwys 13/22/31)
127.1 269.1 (Rwy 4 CORPUS CHRISTI TRANSITION)
125.1 307.0 (Rwy 4 LAREDO TRANSITION)
SAN ANTONIO TOWER
119.8 257.8

**TOP ALTITUDE:
5000**

TAKEOFF MINIMUMS
Rwys 4, 13L, 13R, 22,
31L, 31R: Standard.

NOTE: RADAR Required.

SAN ANTONIO
116.8 SAT
Chan 115
N29°38.64'
W98°27.68'

YENNS
N29°04.08'
W98°19.32'

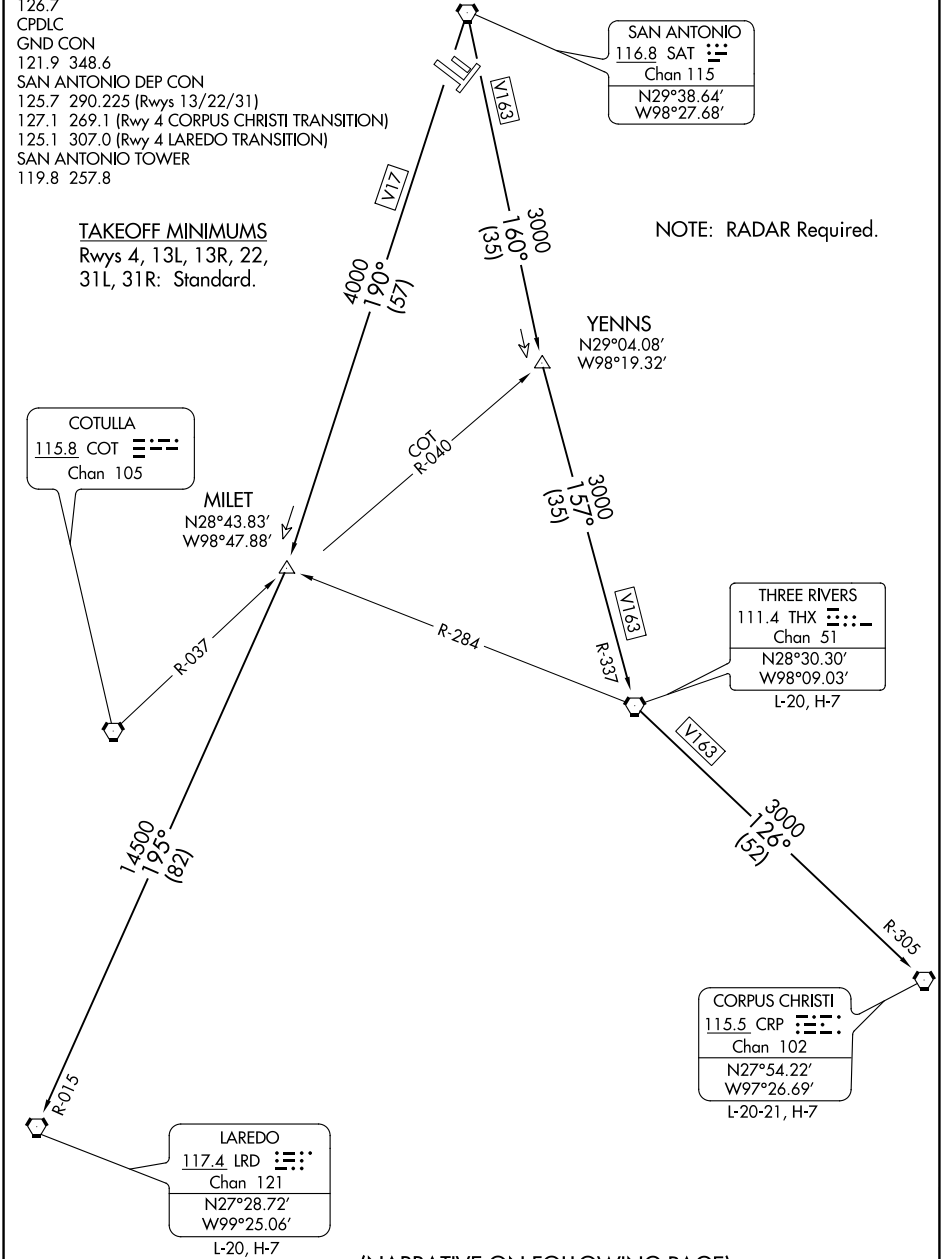
THREE RIVERS
111.4 THX
Chan 51
N28°30.30'
W98°09.03'
L-20, H-7

CORPUS CHRISTI
115.5 CRP
Chan 102
N27°54.22'
W97°26.69'
L-20-21, H-7

LAREDO
117.4 LRD
Chan 121
N27°28.72'
W99°25.06'
L-20, H-7

COTULLA
115.8 COT
Chan 105

MILET
N28°43.83'
W98°47.88'



NOTE: Chart not to scale.

(NARRATIVE ON FOLLOWING PAGE)

BOWIE SEVEN DEPARTURE
(BOWIE7.BOWIE) 02MAR17

SAN ANTONIO, TEXAS
SAN ANTONIO INTL (SAT)

SC-3, 31 DEC 2020 to 28 JAN 2021

SC-3, 31 DEC 2020 to 28 JAN 2021