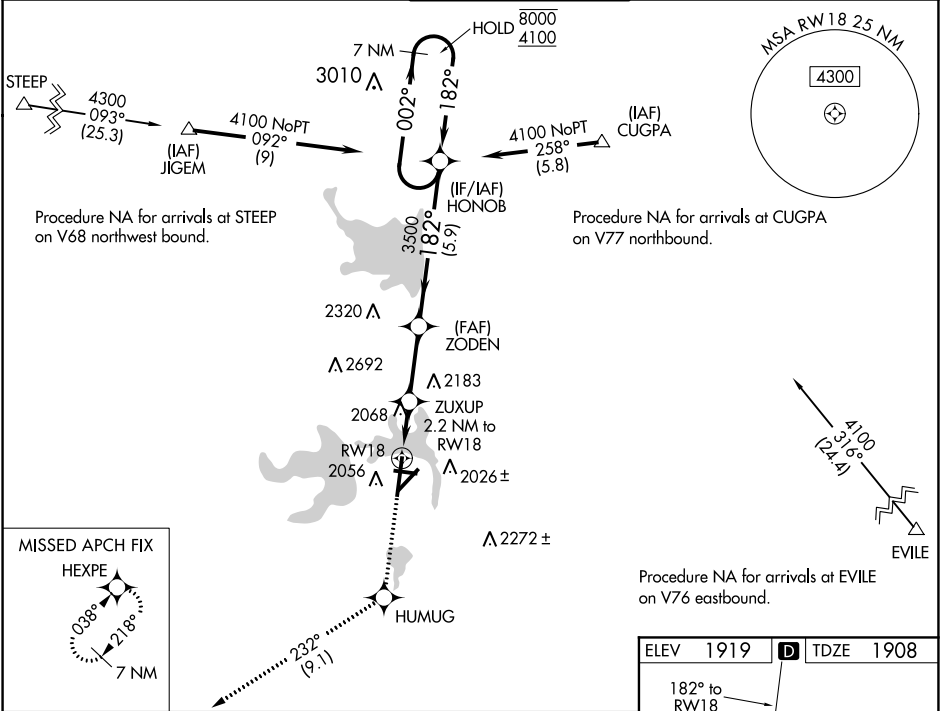



WAAS CH <b>93801</b> <b>W18A</b>	APP CRS <b>182°</b>	Rwy Idg TDZE <b>1908</b> Apt Elev <b>1919</b>
--	------------------------	---

**RNAV (GPS) RWY 18**  
SAN ANGELO RGNL/MATHIS FIELD (SJT)

RNP APCH: For uncompensated Baro-VNAV systems, LNAV/VNAV NA below -8°C or above 54°C. Circling NA for Cat E west of Rwy 18-36.	MISSED APPROACH: Climb to 4400 direct HUMUG and on track 232° to HEXPE and hold.
--	--

ATIS <b>128.45 319.0</b>	SAN ANGELO APP CON ★ <b>125.35 354.1</b>	MATHIS TOWER ★ <b>118.3 (CTAF) 284.7</b>	GND CON <b>121.9 348.6</b>	UNICOM <b>122.95</b>
-----------------------------	---	---	-------------------------------	-------------------------



4400 ↑	HUMUG ✧	tr 232° ✧	HEXPE ✧	7 NM Holding Pattern		
*LNAV only		ZUXUP 2.2 NM to RW18	ZODEN 3500	HONOB	002° → 8000 ← 182° 4100	
		*1.2 NM to RW18	*2640	3500	GP 3.00° TCH 45°	
1.2 NM		1 NM	2.7 NM	5.9 NM		
CATEGORY	A	B	C	D	E	
LPV DA	2158-¾		250 (300-¾)			
LNAV/ VNAV DA	2246-1		338 (400-1)			
LNAV MDA	2320-1	412 (500-1)	2320-1⅛		412 (500-1⅛)	
CIRCLING	2360-1 441 (500-1)	2380-1 461 (500-1)	2500-1½ 581 (600-1½)	2700-2½ 781 (800-2½)	2700-2¾ 781 (800-2¾)	

