

LOC/DME I-SJT	APP CRS	Rwy Idg	5940
109.7	038°	TDZE	1917
Chan 34		Apt Elev	1919

ILS Y or LOC Y RWY 3  
SAN ANGELO RGNL/MATHIS FIELD (SJT)

ADF or DME required for procedure entry.

Autopilot coupled approach NA below 2685. For Inop ALS, increase S-ILS 3 Cat E visibility to RVR 4000, S-LOC 3 Cat C/D/E visibility to 2 SM. Circling NA for Cat E west of Rwy 18-36. ERRNY DME minimums: For Inop ALS, increase S-LOC 3 Cat C/D/E visibility to RVR 5500.  
# RVR 1800 authorized with use of FD or AP or HUD to DA.

MALSR

MISSED APPROACH: Climb to 4000 then right turn direct SJT VORTAC and hold.

ATIS

128.45 319.0

SAN ANGELO APP CON \*

125.35 354.1

MATHIS TOWER \*

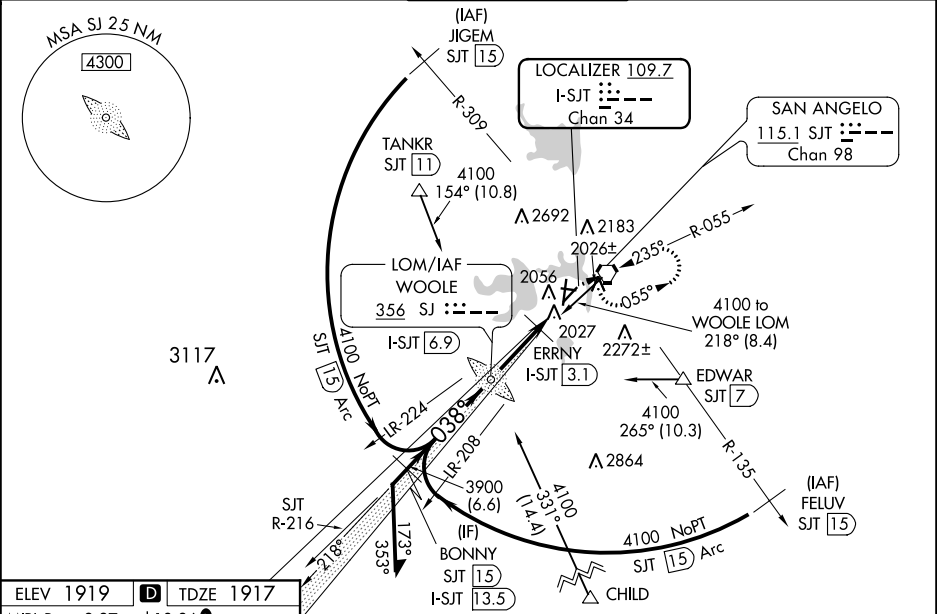
118.3 (CTAF) 284.7

GND CON

121.9 348.6

UNICOM

122.95



ELEV 1919 TDZE 1917

MIRL Rwy 9-27 and 18-36  
HIRL Rwy 3-21  
REIL Rwy 18

TWR 1990

0.3% UP  
0.4% UP  
0.3% DOWN

038° 5.7 NM from FAF

FAF to MAP 5.7 NM

Knots	60	90	120	150	180
Min:Sec	5:42	3:48	2:51	2:17	1:54

Use I-SJT DME when on the localizer course.

Remain within 10 NM

SJ LOM I-SJT 6.9

ERRNY I-SJT 3.1

Cat E procedure turn NA.

GS 3.00° TCH 51

\*LOC only

CATEGORY	A	B	C	D	E
S-ILS 3 #	2117/24 200 (200-1/2)				
S-LOC 3	2620/24 703 (800-1/2) 2620-1 703 (800-1 1/2)				
CIRCLING	2620-1 701 (800-1) 2620-2 701 (800-2) 2700-2 1/2 781 (800-2 1/2) 2700-2 3/4 781 (800-2 3/4)				
ERRNY DME MINIMUMS					
S-LOC 3	2280/24 363 (400-1/2) 2280/35 363 (400-3/4)				
CIRCLING	2360-1 441 (500-1) 2380-1 461 (500-1) 2500-1 1/2 581 (600-1 1/2) 2700-2 1/2 781 (800-2 1/2) 2700-2 3/4 781 (800-2 3/4)				

SC-3, 31 DEC 2020 to 28 JAN 2021

SC-3, 31 DEC 2020 to 28 JAN 2021