
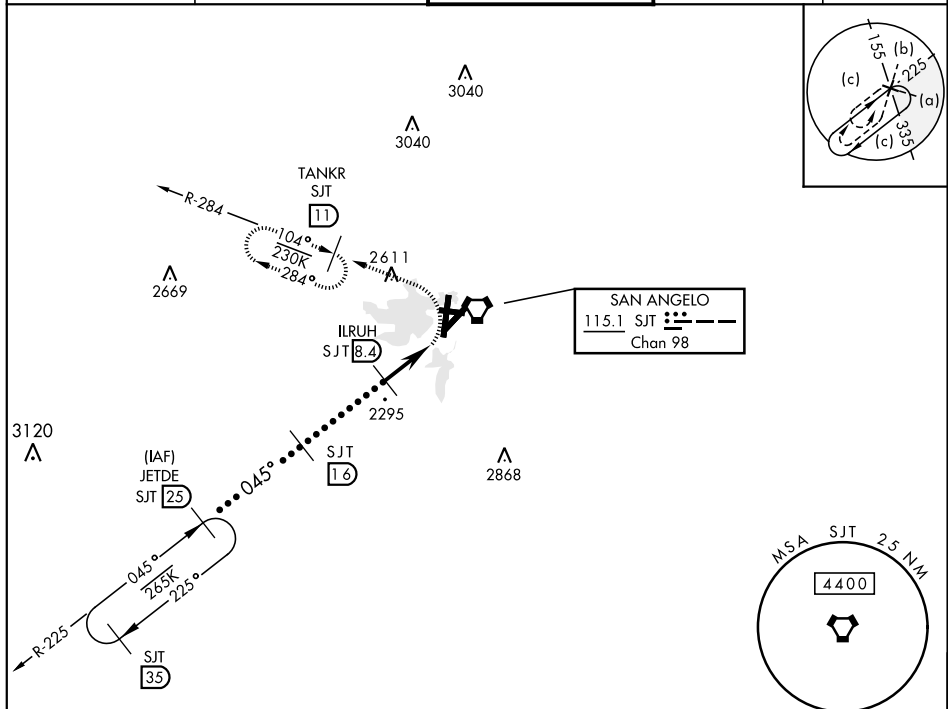


HI-VOR/DME or TACAN RWY 3

VORTAC SJT 115.1 Chan 98	APCH CRS 045°	Rwy ldg 5939 TDZE 1917 Arprt Elev 1919	JAL-367 [USAF]	SAN ANGELO REGIONAL/MATHIS FIELD (KSJT)	
* CAT E Circling not authorized W of Rwy 18-36.			MALSR 	MISSED APPROACH: Climbing left turn to 4400 via SJT VORTAC R-284 to TANKR INT/11 DME and hold.	
ATIS 128.45 319.0	SAN ANGELO APP CON 125.35 354.1	MATHIS TOWER ★ 118.3 0 (CTAF) 284.7	GND CON 121.9 348.6	ASR	



RADAR REQUIRED
EMERG SAFE ALT 100 NM 5100

JETDE R-225 25		4400 SJT R-284		TANKR SJT 11
12,000	045°	5000	16	ILRUH 8.4
3.23° TCH 50				3900
		5.1 NM	5 NM	VORTAC
CATEGORY	C	D	E	
S-3	2420-1 503	(600-1)	2420-1½ 503 (600-1¼)	
CIRCLING *	2460-1½ 541 (600-1½)	2480-2 561 (600-2)	2640-2½ 721 (800-2½)	

SAN ANGELO, TEXAS

31°22'N-100°30'W

SAN ANGELO REGIONAL/MATHIS FIELD (KSJT)

Amdt 5A 24MAY18

HI-VOR/DME or TACAN RWY 3