

## RNAV (GPS) RWY 15L

APCH CRS <b>145°</b>	Rwy Idg <b>8351</b> TDZE <b>742</b> Arpt Elev <b>761</b>
-------------------------	--

AL-341 [USAF]

RANDOLPH AFB (KRND)

\* When ALS inop, increase vis all CATs to 1 5/8 miles.

**\*\* When ALS inop, increase CAT AB RVR to 55 and vis to 1 mile, CAT CDE vis to 1 3/8 miles.**

ALSF-1

**MISSED APPROACH:** Climb to 1500, then climbing left turn to 3000 direct HOSPA. Expect ATC instructions.

ATIS ★	SAN ANTONIO APP CON	RANDOLPH TOWER ★	RANDOLPH GND CON	CLNC DEL (RWY 15L-33R)	HANGOVER ATIS ★	HANGOVER TOWER ★	HANGOVER GND CON
290.525	128.05 318.1	128.25 294.7	119.65 275.8	338.35	327.8	120.5 291.1	124.75 353.75

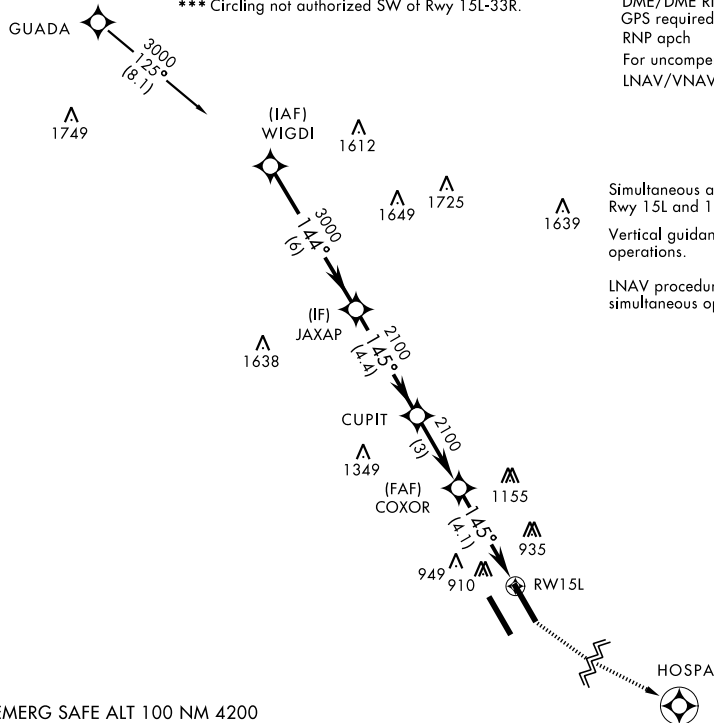
\*\*\* Circling not authorized SW of Rwy 15L-33R.

DME/DME RNP-0.3 NA

GPS required

RNP apch

For uncompensated Baro-VNAV systems,  
LNAV/VNAV NA below -16°C (3°F).

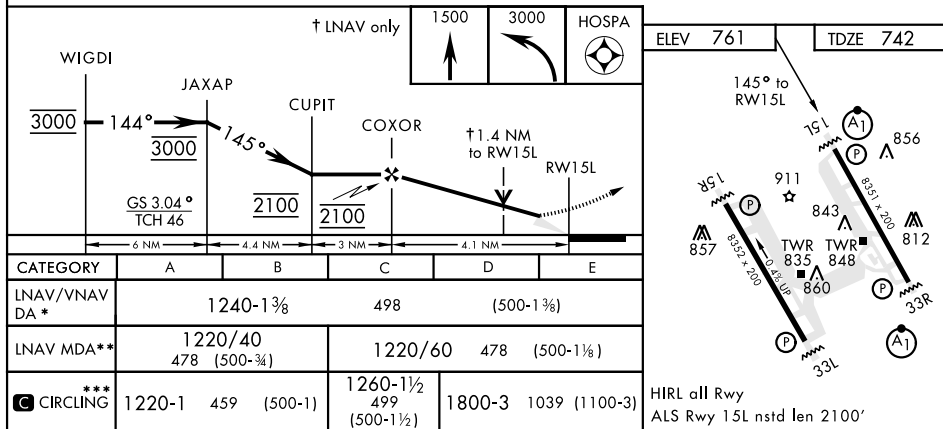


Simultaneous approach authorized with  
Rwy 15L and 15R.

Vertical guidance required for simultaneous operations.

LNAV procedures NA during simultaneous operations.

EMERG SAFE ALT 100 NM 4200



UNIVERSAL CITY, TEXAS

29°32'N-98°17'W

RANDOLPH AFB (KRND)

## RNAV (GPS) RWY 15L

Orig 11OCT18

SC-3, 31 DEC 2020 to 28 JAN 2021