

TACAN DHK Chan 36	APCH CRS 144°	Rwy ldg THRE Arprt Elev N/A N/A 761
-----------------------------	-------------------------	---

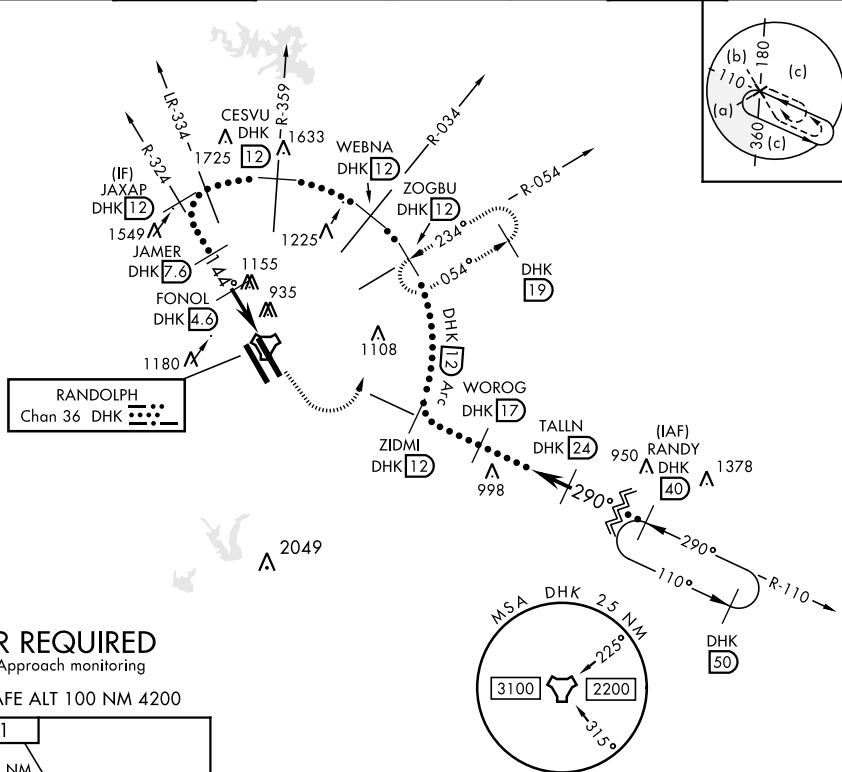
JAL-341 [USAF]

RANDOLPH AFB (KRND)

* Circling not authorized SW of Rwy 15L-33R.

MISSED APPROACH: Track 145° to 1500. Then climbing left turn to 3000. Intercept DHK TACAN R-054 direct ZOGBU and hold as published.

ATIS ★ 290.525	SAN ANTONIO APP CON 128.05 318.1	RANDOLPH TOWER ★ 128.25 294.7	RANDOLPH GND CON 119.65 275.8	CLNC DEL (RWY 15L-33R) 338.35	HANGOVER ATIS ★ 327.8	HANGOVER TOWER ★ 120.5 291.1	HANGOVER GND CON 124.75 353.75
--------------------------	---	--	--	--	------------------------------------	---	---



RADAR REQUIRED

For Missed Approach monitoring

EMERG SAFE ALT 100 NM 4200

