

VORTAC MAF <b>114.8</b> Chan <b>95</b>	APP CRS <b>357°</b>	Rwy Idg TDZE Apt Elev	<b>9501</b> <b>2858</b> <b>2872</b>
--	------------------------	-----------------------------	---

VOR or TACAN RWY 34L  
MIDLAND INTL AIR AND SPACE PORT (MAF)

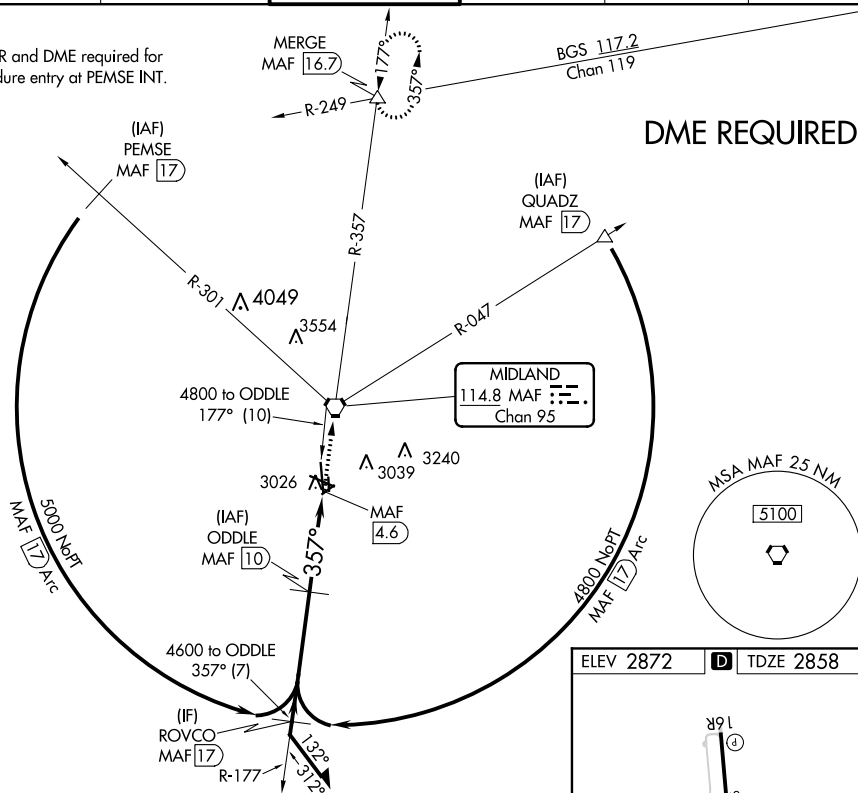
<b>T</b>	Circling Rwy 16L NA at night. Rwy 34L helicopter visibility reduction below $\frac{3}{4}$ SM NA. DME required.
<b>A</b>	
ASR	

**MISSED APPROACH:** Climb to 4800 direct MAF VORTAC and on MAF VORTAC R-357 to MERGE INT/MAF 16.7 DME and hold.

ATIS	MIDLAND APP CON*	MIDLAND TOWER *	GND CON	CLNC DEL	UNICOM
126.8 235.975	124.6 290.4	118.7 (CTAF) 0273.45	121.9 348.6	118.05 317.65	122.95

RADAR and DME required for procedure entry at PEMSE INT.

## DME REQUIRED



SC-3, 31 DEC 2020 to 28 JAN 2021

Remain within 10 NM

4800 — 177° — 4800 — 357° — 4800 — 357° — 4600

ROVCO MAF (17)

ODDLE MAF (10)

MAF (5.9)

MAF (4.6)

2.96°

TCH 50

7 NM

4.1 NM

1.3 NM

Procedure turn not authorized for Cat E.

CATEGORY	A	B	C	D	E
S-34L	3320-1	462 (500-1)	3320-1 3/8 462 (500-1 3/8)		
CIRCLING	3440-1	568 (600-1)	3440-1 1/2 568 (600-1 1/2)	3520-2 648 (700-2)	3600-2 1/2 728 (800-2 1/2)

