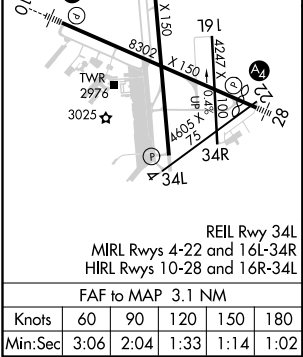
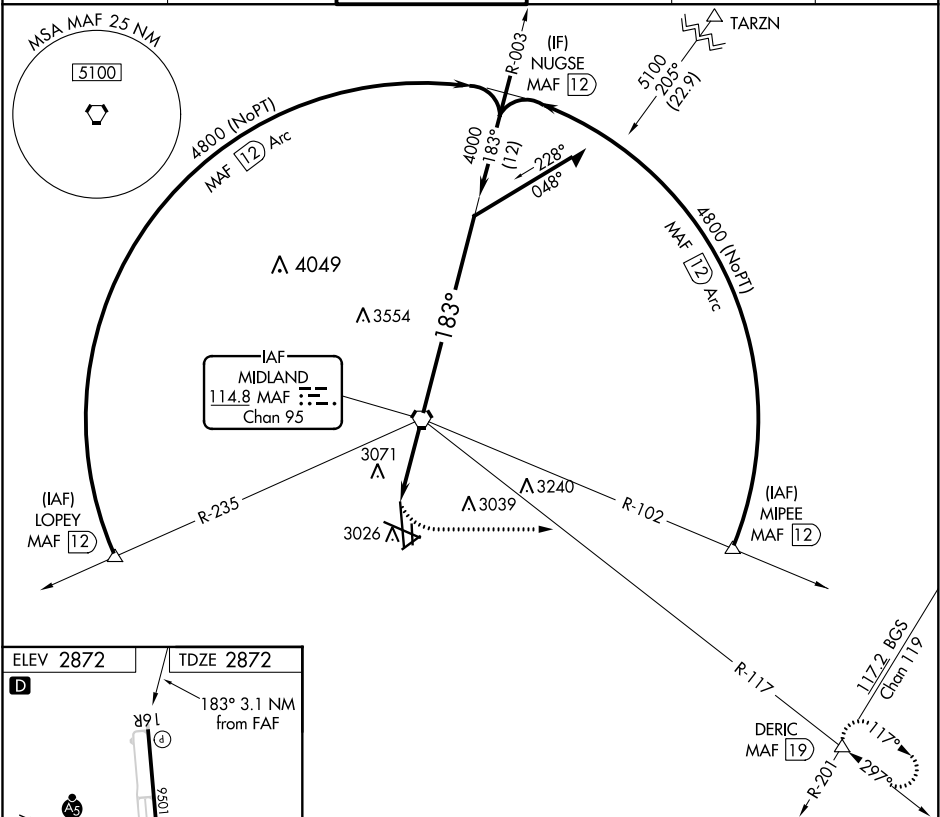


VORTAC MAF 114.8 Chan 95	APP CRS 183°	Rwy Idg TDZE Apt Elev	9501 2872 2872
--	------------------------	-----------------------------	---

VOR or TACAN RWY 16R
MIDLAND INTL AIR AND SPACE PORT (MAF)

V ASR	Rwy 16R helicopter visibility reduction below ¾ SM NA. Circling Rwy 16L NA at night.	MISSED APPROACH: Climbing left turn to 4800 on heading 090° and on MAF VORTAC R-117 to DERIC INT/MAF 19 DME and hold.
------------------------	---	---

ATIS 126.8 235.975	MIDLAND APP CON ★ 124.6 290.4	MIDLAND TOWER ★ 118.7 (CTAF) 0273.45	GND CON 121.9 348.6	CLNC DEL 118.05 317.65	UNICOM 122.95
------------------------------	---	--	-------------------------------	----------------------------------	-------------------------



4800 hdg 090°	MAF R-117	DERIC △	VGSI and descent angles not coincident (VGSI Angle 3.00/TCH 50).	MAF VORTAC	003°	5100	Remain within 10 NM
Procedure turn not authorized for Cat E.							
CATEGORY							
S-16R							
CIRCLING							
A	B	C	D	E			
3400-1	528 (600-1)	3400-1½	528 (600-1½)	3400-1½	3520-2	3600-2½	
3440-1	568 (600-1)	3440-1½	568 (600-1½)	648 (700-2)	728 (800-2½)		

SC-3, 31 DEC 2020 to 28 JAN 2021

SC-3, 31 DEC 2020 to 28 JAN 2021