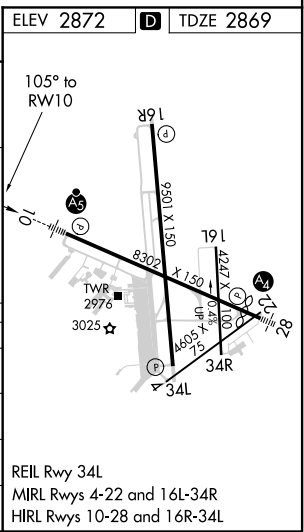
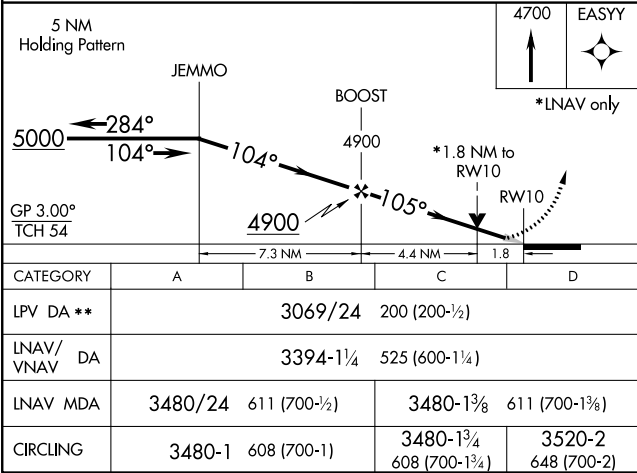
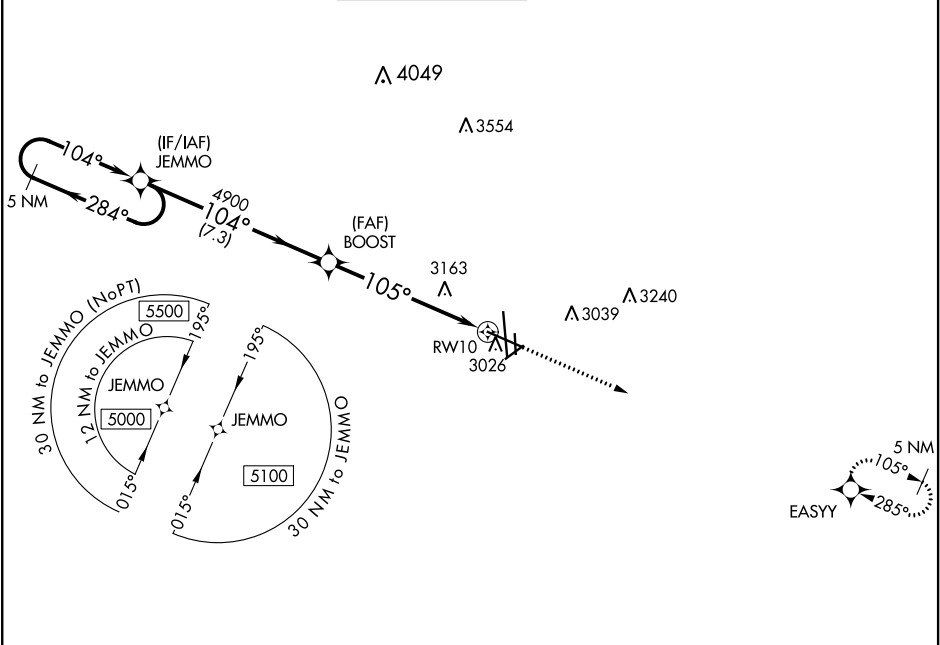


WAAS CH 69310 W10A	APP CRS 105°	Rwy Idg TDZE 2869 Apt Elev 2872
--	------------------------	---

RNAV (GPS) RWY 10
MIDLAND INTL AIR AND SPACE PORT (MAF')

▼ For uncompensated Baro-VNAV systems, LNAV/VNAV NA below -11°C (13°F) or above 25°C (77°F). Circling Rwy 16L NA at night. DME/DME RNP-0.3 NA. ASR ** RVR 1800 authorized with use of FD or AP or HUD to DA.	MALSR 	MISSED APPROACH: Climb to 4700 direct EASYY and hold.
---	-----------	---

ATIS 126.8 235.975	MIDLAND APP CON* 124.6 290.4	MIDLAND TOWER* 118.7 (CTAF) 0273.45	GND CON 121.9 348.6	CLNC DEL 118.05 317.65	UNICOM 122.95
------------------------------	--	---	-------------------------------	----------------------------------	-------------------------



SC-3, 31 DEC 2020 to 28 JAN 2021

SC-3, 31 DEC 2020 to 28 JAN 2021