

MIDLAND, TEXAS

17201

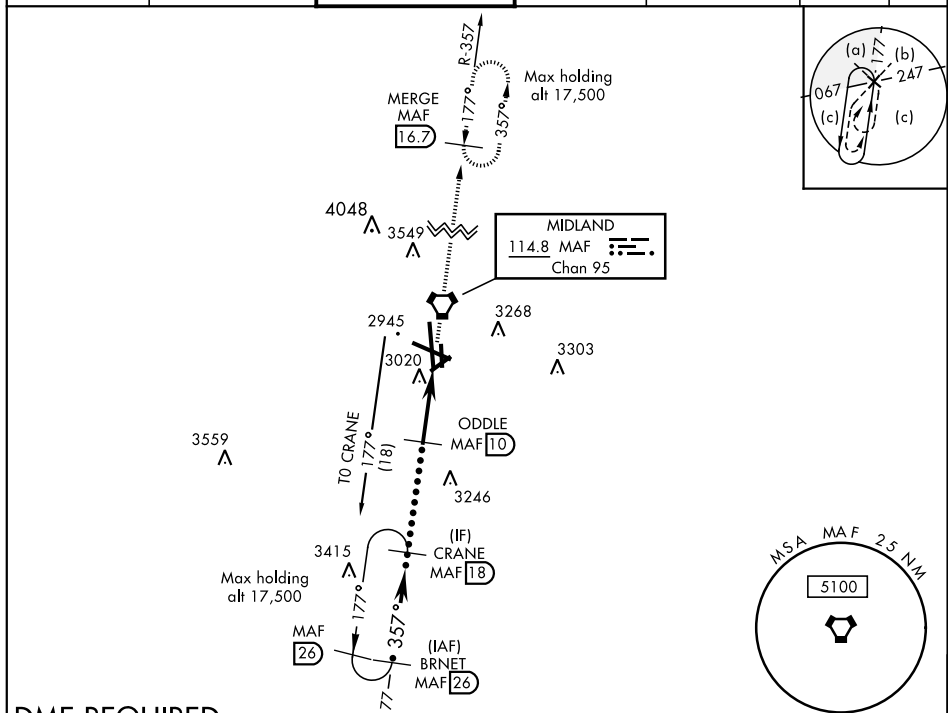
HI-VOR or TACAN RWY 34L

JAL-258 [USAF] MIDLAND INTL AIR AND SPACE PORT (KMAF)

VORTAC MAF 114.8 Chan 95	APCH CRS 357°	Rwy ldg TDZE Arprt Elev 9501 2858 2872
--	-------------------------	--

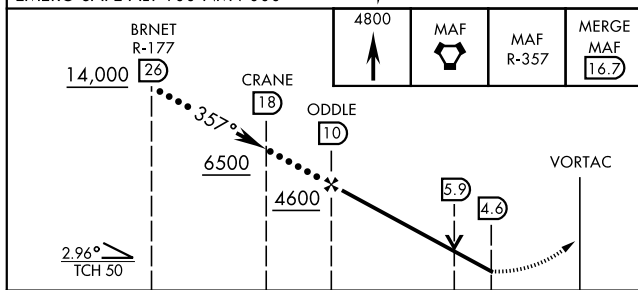
* Circling Rwy 16L NA at night	MISSED APPROACH: Climb to 4800 direct MAF VORTAC and on MAF VORTAC R-357 to MERGE/MAF 16.7 DME and hold.
--------------------------------	--

ATIS ★ 126.8 235.975	MIDLAND APP CON 124.6 290.4	MIDLAND TOWER ★ 118.7(CTAF) 0 273.45	GND CON 121.9 348.6	CLNC DEL 118.05 317.65	UNICOM 122.95	ASR
--------------------------------	---------------------------------------	--	-------------------------------	----------------------------------	-------------------------	-----

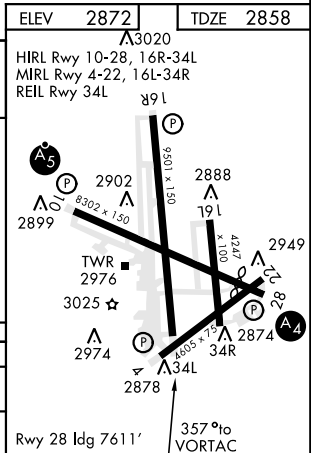


DME REQUIRED

EMERG SAFE ALT 100 NM 7000



CATEGORY	C	D	E
S-34L	3320-1½ 568 (600-1½)	462 (500-1½)	
CIRCLING *	3440-1½ 568 (600-1½)	3520-2 648 (700-2)	3600-2½ 728 (800-2½)



MIDLAND, TEXAS

31° 57' N-102° 12' W

MIDLAND INTL AIR AND SPACE PORT (KMAF)

Amtd 3 20JUL17

HI-VOR or TACAN RWY 34L

SC-3, 31 DEC 2020 to 28 JAN 2021