

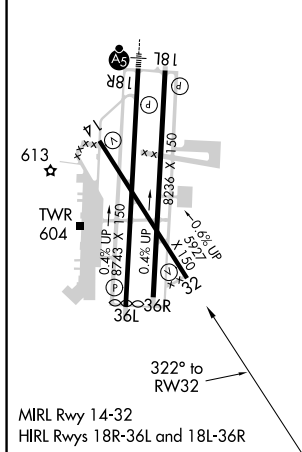
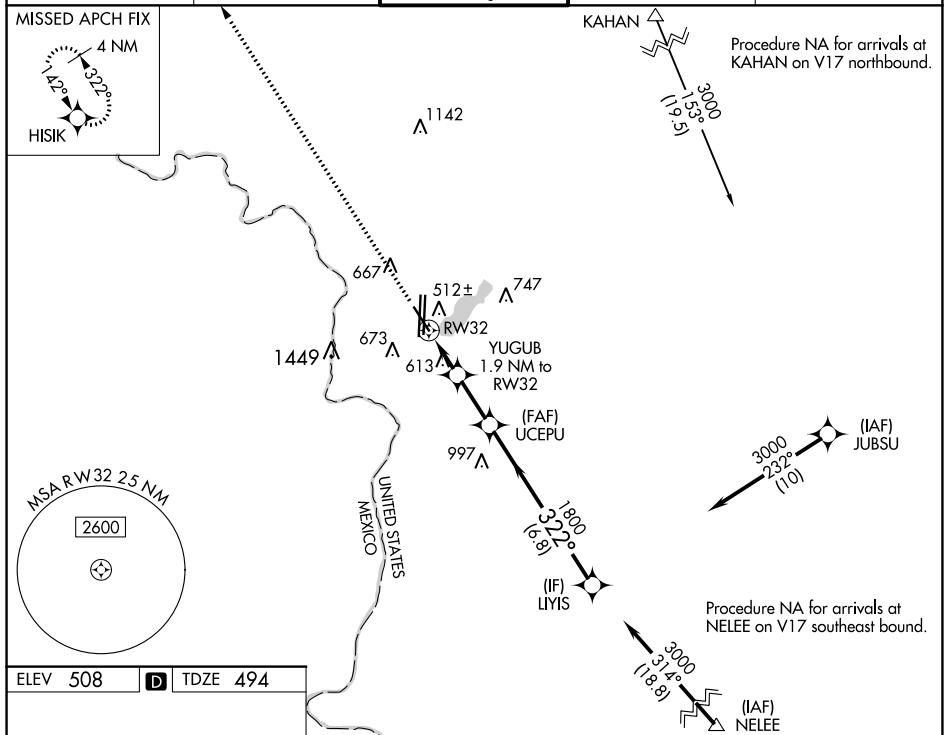
WAAS CH <b>86633</b> <b>W32A</b>	APP CRS <b>322°</b>	Rwy Idg <b>5927</b> TDZE <b>494</b> Apt Elev <b>508</b>
--	------------------------	---

RNAV (GPS) RWY 32  
LAREDO INTL (LRD)

**T** For uncompensated Baro-VNAV systems, LNAV/VNAV NA below 1°C (34°F) or  
**A** above 54°C (130°F). Circling NA west of Rwy 14 and 36L. Rwy 32 helicopter  
visibility reduction below  $\frac{3}{4}$  SM NA. DME/DME RNP-0.3 NA.

**MISSED APPROACH:** Climb to 3000 direct HISIK and hold.

ATIS 125.775	HOUSTON CENTER 127.8 307.2	LAREDO TOWER ★ 120.1(CTAF) 257.9	GND CON 121.8	UNICOM 122.95
-----------------	-------------------------------	-------------------------------------	------------------	------------------



3000  
↑  
HISIK  
\* RNAV only  
RW32  
\* 1.1 NM to RW32  
YUGUB 1.9 NM to RW32  
UCEPU 1800  
LYMS 3000  
322°  
1800  
GP 3.00° TCH 50  
1.1 NM 0.8 NM 2.1 NM 6.8 NM  
CATEGORY A B C D E  
LPV DA 744-3/4 250 (300-3/4)  
RNAV/VNAV DA 826-1 332 (400-1)  
RNAV MDA 880-1 386 (400-1) 880-1 386 (400-1 1/8)  
CIRCLING 940-1 980-1 1100-1 1200-2 1200-2  
432 (500-1) 472 (500-1) 592 (600-1 1/2) 692 (700-2 1/4) 692 (700-2 1/2)