

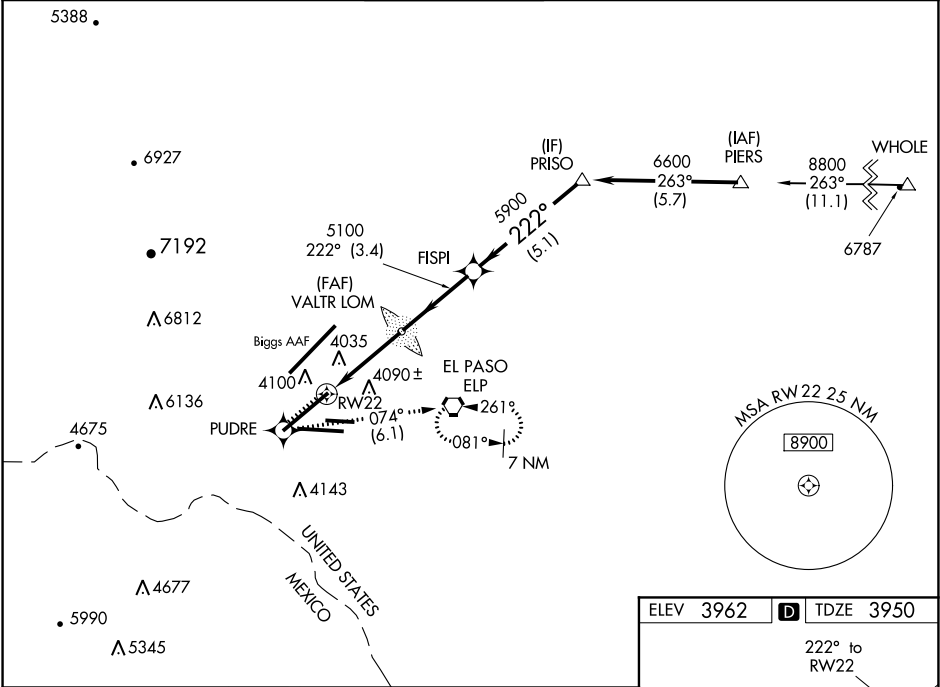
APP CRS 222°	Rwy Idg TDZE 3950 Apt Elev 3962
------------------------	---

RNAV (GPS) Y RWY 22

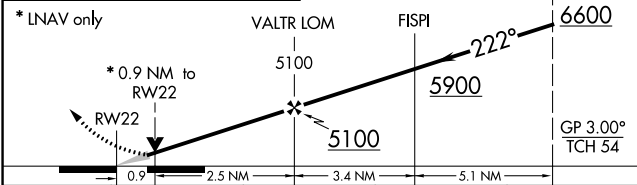
EL PASO INTL (ELP)

RNP APCH. ASR Circling NA for Cat D north of Rwy 26R and northwest of Rwy 4. For uncompensated Baro-VNAV systems, LNAV/VNAV NA below -9°C or above 54°C. For inop ALS increase LNAV/VNAV Cat D visibility to RVR 5500 and LNAV Cat C/D visibility to RVR 5500.	MALS 	MISSED APPROACH: Climb to 4600 direct PUDRE and climbing left turn to 6900 on track 074° to ELP VORTAC and hold.
--	----------	--

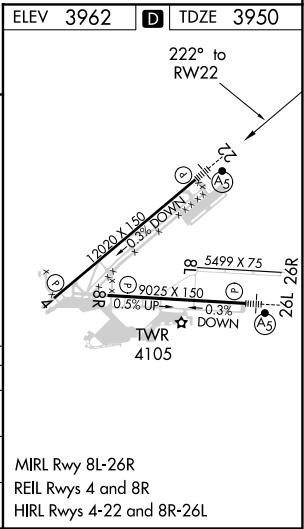
D-ATIS 120.0 254.3	EL PASO APP CON 124.25 298.85	EL PASO TOWER 118.3 239.275	GND CON 121.9 348.6	CLNC DEL 125.0 379.1
------------------------------	---	---------------------------------------	-------------------------------	--------------------------------



4600 	PUDRE 	6900 tr 074°	ELP 	VGSI and RNAV glidepath not coincident (VGSI Angle 3.00/TCH 70).
----------	-----------	--------------------	---------	--



CATEGORY	A	B	C	D
LNAV/VNAV DA	4274/26	324 (400-½)		4274/40 324 (400-¾)
LNAV MDA	4300/24	350 (400-½)	4300/30 350 (400-¾)	4300/50 350 (400-1)
CIRCLING	4420-1 458 (500-1)	4440-1 478 (500-1)	4460-1½ 498 (500-1½)	4680-2¼ 718 (800-2¼)



SC-3, 31 DEC 2020 to 28 JAN 2021

SC-3, 31 DEC 2020 to 28 JAN 2021