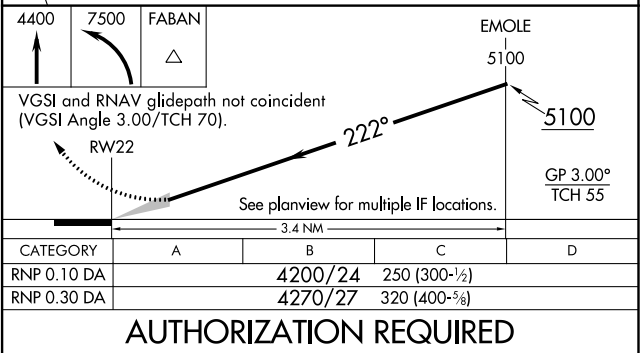
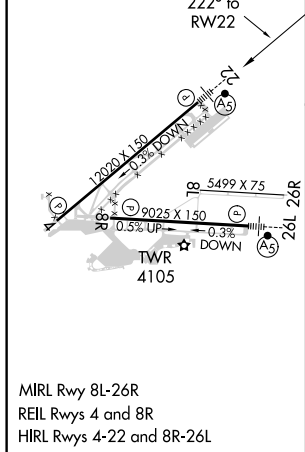
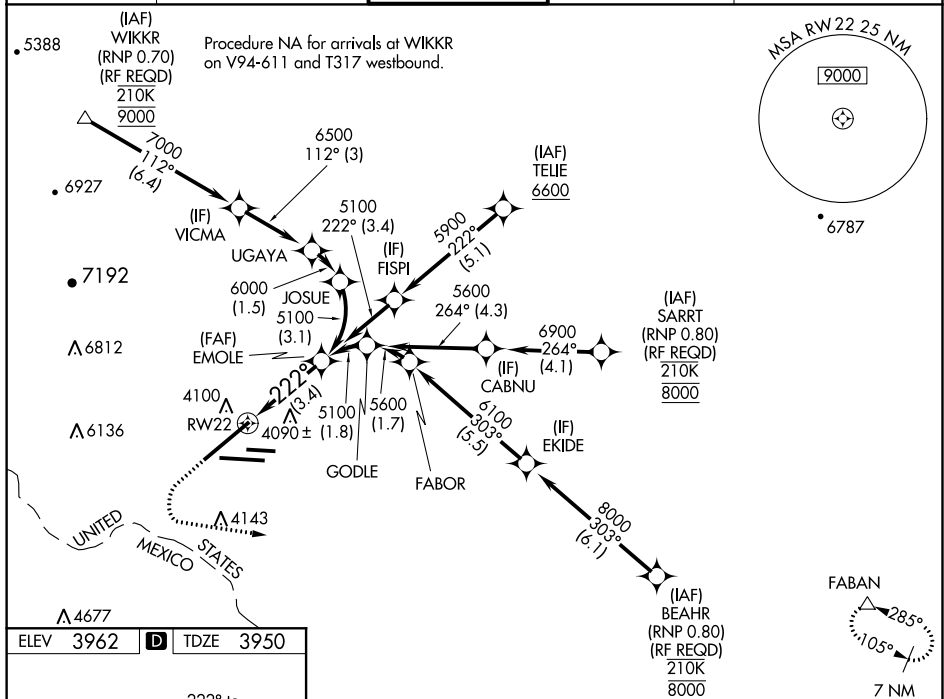


RNAV (RNP) Z RWY 22
EL PASO INTL (ELP)

MISSED APPROACH: Climb to 4400 then climbing left turn to 7500 direct FABAN and hold.

D-ATIS 120,0 254.3	EL PASO APP CON 124,25 298,85	EL PASO TOWER 118.3 239,275	GND CON 121.9 348.6	CLNC DEL 125,0 379.1
-----------------------	----------------------------------	--------------------------------	------------------------	-------------------------



SC-3, 31 DEC 2020 to 28 JAN 2021

SC-3, 31 DEC 2020 to 28 JAN 2021