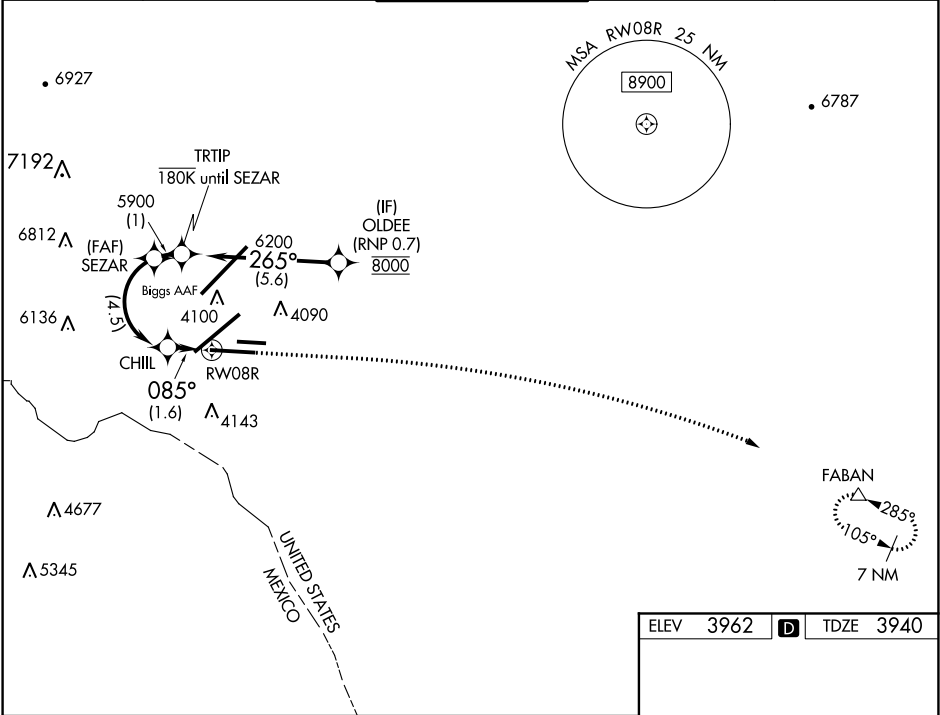



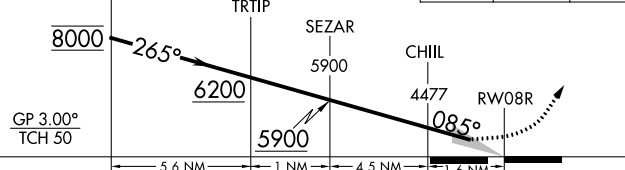
APP CRS	Rwy Idg	9025
085°	TDZE	3940
	Apt Elev	3962

RNAV (RNP) Y RWY 08R
EL PASO INTL (ELP)

RNP AR APCH. RF required.	MISSED APPROACH: Climb to 4400 then climbing right turn to 7500 direct FABAN and hold.
For uncompensated Baro-VNAV systems, procedure NA below -5°C or above 54°C.	

D-ATIS 120.0 254.3	EL PASO APP CON 124.25 298.85	EL PASO TOWER 118.3 239.275	GND CON 121.9 348.6	CLNC DEL 125.0 379.1
-----------------------	----------------------------------	--------------------------------	------------------------	-------------------------



VGSi and RNAV glidepath not coincident (VGSi Angle 3.00/TCH 75).					<div>4400</div> <div>↑</div>		<div>7500</div> <div></div>		<div>FABAN</div> <div>△</div>		
											
CATEGORY	A		B		C		D				
RNP 0.20 DA			4193- ³ / ₄		253 (300- ³ / ₄)						
RNP 0.30 DA			4234- ⁷ / ₈		294 (300- ⁷ / ₈)						
AUTHORIZATION REQUIRED											

