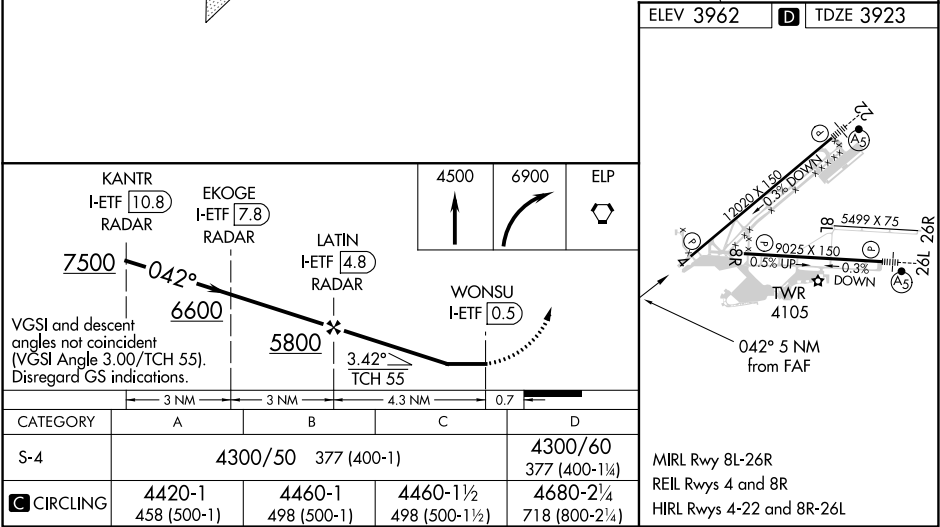
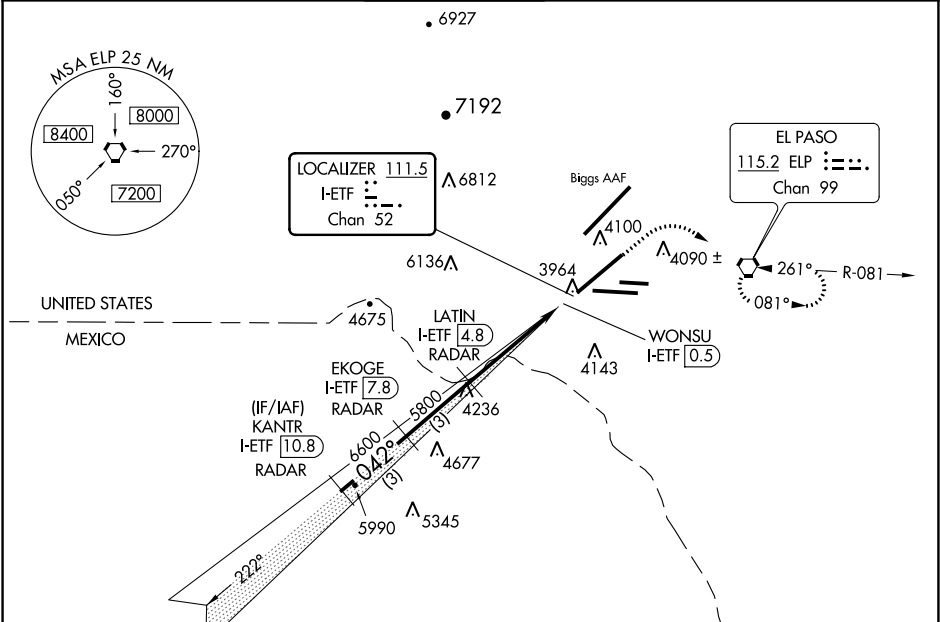


LOC/DME I-ETF	APP CRS	Rwy Idg	12020
111.5	042°	TDZE	3923
Chan 52		Apt Elev	3962

LOC/DME RWY 4
EL PASO INTL (ELP)

RADAR required for procedure entry.		MISSED APPROACH: Climb to 4500 then climbing right turn to 6900 direct ELP VORTAC and hold, continue climb-in-hold to 6900.	
Circling NA for Cat D north of Rwy 26R and northwest of Rwy 4.			

D-ATIS	EL PASO APP CON	EL PASO TOWER	GND CON	CLNC DEL
120.0 254.3	124.25 298.85	118.3 239.275	121.9 348.6	125.0 379.1



SC-3, 31 DEC 2020 to 28 JAN 2021

SC-3, 31 DEC 2020 to 28 JAN 2021