

DEL RIO, TEXAS

VOR/DME RWY 31C

VORTAC DLF 114.4 Chan 91	APCH CRS 322°	Rwy Idg 8852 TDZE 1078 Arpt Elev 1081
--	-------------------------	--

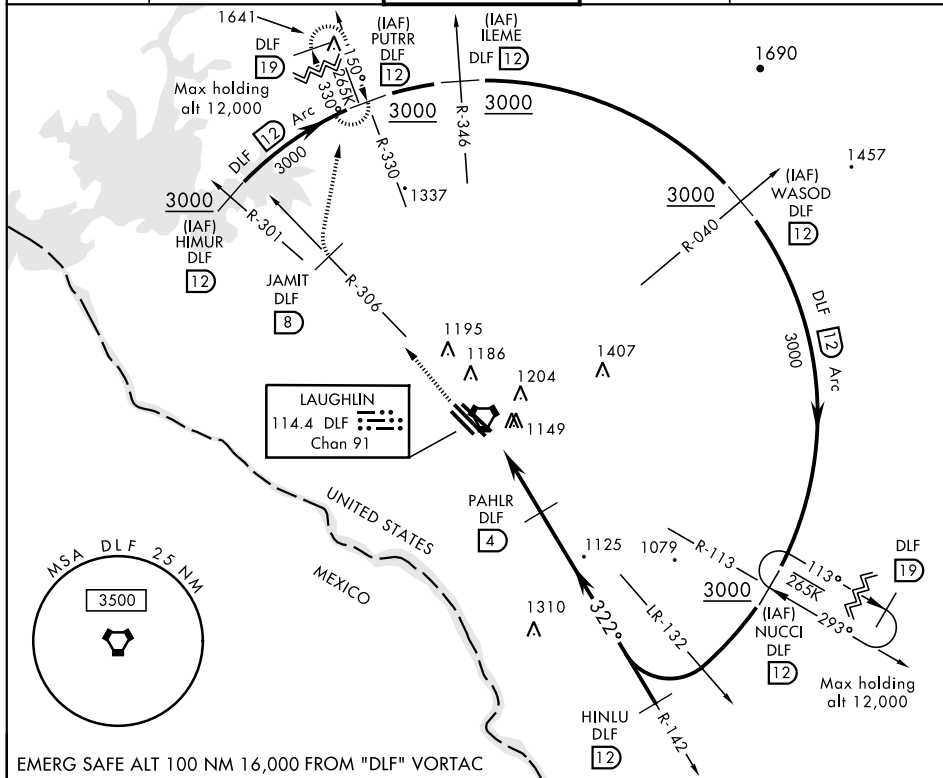
AL-111 [USAF]

LAUGHLIN AFB (KDLF)

T *Circling not authorized in sector SW of Rwy 13R-31L.

MISSED APPROACH: Climb to 3000 on DLF VORTAC R-306 to 8 DME (JAMIT), then turn right to intercept DLF R-330 to 12 DME (PUTRR), and hold.

ATIS ★ 114.4 269.9	DEL RIO APP CON 119.6 259.1	LAUGHLIN TOWER ★ 125.2 307.375	GND CON 275.8	CLNC DEL 120.5 335.8
-----------------------	--------------------------------	-----------------------------------	------------------	-------------------------



EMERG SAFE ALT 100 NM 16.000 FROM "DLF" VORTAC

CATEGORY	A	B	C	D	E
S-31C	1420-1		342 (400-1)		
CIRCLING*	1500-1 419 (500-1)	1540-1 459 (500-1)	1700-1½ 619 (700-1½)	1700-2 619 (700-2)	1720-2½ 639 (700-2½)

DEL RIO, TEXAS

29°22'N-100°47'W

LAUGHLIN AFB (KDLF)

VOR/DME RWY 31C

SC-3, 31 DEC 2020 to 28 JAN 2021

SC-3, 31 DEC 2020 to 28 JAN 2021