

RNAV (GPS) RWY 13C

APCH CRS	13C	13L	13R
Rwy Idg	8852	8315	6571
TDZE	1081	1078	1076
Arpt Elev	1081		

AL-111 (USAF)

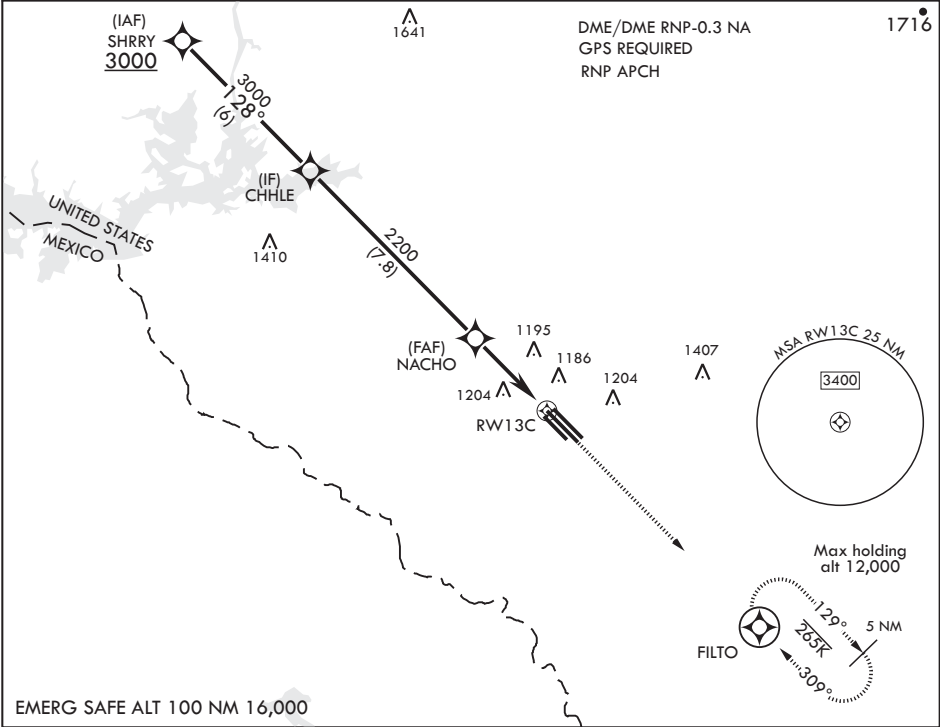
LAUGHLIN AFB (KDLF)

⚠ * When ALS inop, increase CAT AB RVR to 55 and vis to 1 mile, CAT CDE vis to 1 1/4 miles.
** Circling SW of Rwy 13R-31L not authorized.

Rwy 13C
ALSF-1

MISSED APPROACH: Climb to 3000 direct FILTO and hold.

ATIS★ 114.4 269.9	DEL RIO APP CON 119.6 259.1	TOWER★ 125.2 307.375	GND CON 275.8	CLNC DEL 120.5 335.8
----------------------	--------------------------------	-------------------------	------------------	-------------------------



CHHLE 3000

128°

NACHO 2200

1.3 NM to RWY 13C

3.4 NM

RWY 13C

3.04° ≥ TCH 36

3000

FILTO

ELEV 1081

128° to RWY 13C

TDZE 13C 1081
TDZE 13L 1078
TDZE 13R 1076

CATEGORY	A	B	C	D	E
RNAV MDA*	1520/24 439 (500-1/2)		1520/40 439 (500-3/4)		
SIDESTEP 13L	1520-1 442 (500-1)		1520-1 442 (500-1)		
SIDESTEP 13R	1520-1 444 (500-1)		1520-1 444 (500-1)		
CIRCLING**	1520-1 439 (500-1)	1540-1 459 (500-1)	1700-1 619 (700-1 3/4)	1700-2 619 (700-2)	1720-2 639 (700-2 1/4)

Rwy 31L Idg 6241'

MIRL Rwy 13R-31L

HIRL Rwys 13C-31C, 13L-31R

RNAV (GPS) RWY 13C

SC-3, 31 DEC 2020 to 28 JAN 2021

SC-3, 31 DEC 2020 to 28 JAN 2021