

HI-ILS or LOC/DME RWY 13C

LOC I-DLF <u>110.3</u>	APCH CRS 128°	Rwy Idg 13C 8852 13L 8315 TDZE 13C 1081 13L 1078 Arpt Elev 1081
----------------------------------	-------------------------	--

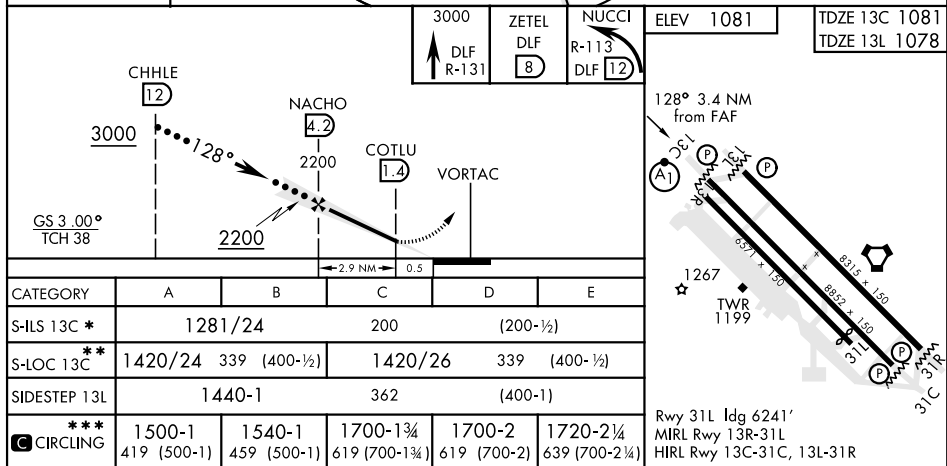
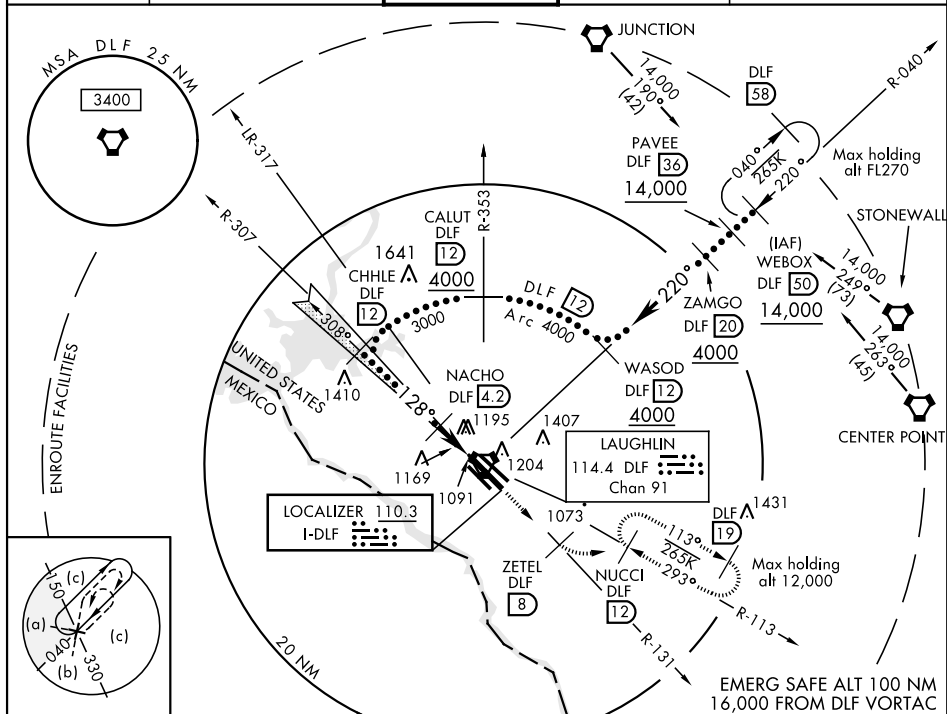
(KDLF)

T * When ALS inop, increase RVR to 40 and vis to $\frac{3}{4}$ mile.
 ** When ALS inop, increase CAT AB RVR to 55 and vis to 1 mile, CAT CDE RVR to 50 and vis to 1 mile.
 *** Circling W of Rwy 13R-31L not authorized.



MISSED APPROACH: Climb to 3000 on DLF VORTAC R-131 to 8 DME (ZETEL), then turn left to intercept DLF R-113 to 12 DME (NUCCI) and hold.

ATIS ★ 114.4 269.9	DEL RIO APP CON 119.6 259.1	LAUGHLIN TOWER ★ 125.2 307.375	GND CON 275.8	CLNC DEL 120.5 335.8
-----------------------	--------------------------------	-----------------------------------	------------------	-------------------------



DEL RIO, TEXAS

29°22'N-100°47'W

LAUGHLIN AFB

(KDLF)

HI-ILS or LOC/DME RWY 13C

SC-3, 31 DEC 2020 to 28 JAN 2021