

CORPUS CHRISTI, TEXAS

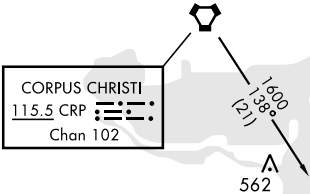
# VOR/DME or TACAN Y RWY 31L

VORTAC CRP <b>115.5</b> Chan <b>102</b>	APCH CRS <b>318°</b>	Rwy Idg <b>8002</b> TDZE <b>18</b> Arpt Elev <b>19</b>
---	-------------------------	--

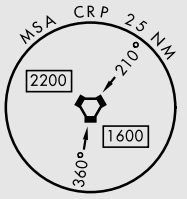
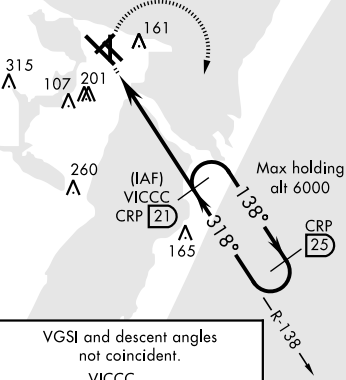
AL-98 [USN]

CORPUS CHRISTI NAS (TRUAX FLD) (KNGP)

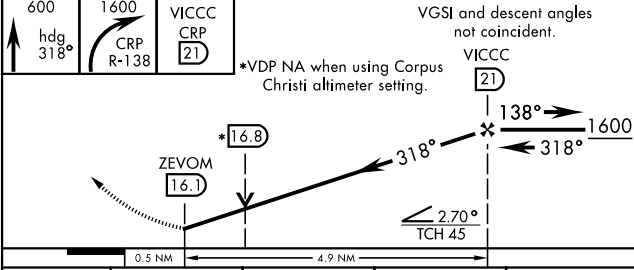
⚠ When local altimeter setting not received, use Corpus Christi altimeter setting.		MISSED APPROACH: Climb to 600 hdg 318°, then climbing right turn to 1600 to intercept CRP VORTAC R-138 to VICCC and hold.			
ATIS ★ 127.9 290.9	CORPUS CHRISTI APP CON 128.675 343.75	NAVY CORPUS TOWER ★ 134.85 0 340.2	GND CON 118.7 257.85	CLNC DEL 314.3	ASR/ PAR



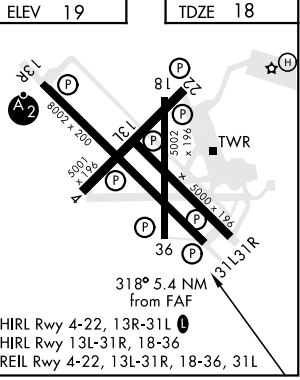
Northbound arrivals on V70-407 and V13-20-163 require turn in holding at CRP VORTAC (See L-20), or RADAR vectors. Holding at CRP NA for TACAN users.



EMERG SAFE ALT 100 NM 11,100



CATEGORY	A	B	C	D
S-31L	440-1	422 (500-1)	440-1¼	422 (500-1¼)
<b>C</b> CIRCLING	480-1	461 (500-1)	540-1½ 521 (600-1½)	620-2 601 (700-2)
CORPUS CHRISTI ALTIMETER SETTING				
S-31L	480-1	462 (500-1)	480-1¾	462 (500-1¾)
<b>C</b> CIRCLING	500-1 481 (500-1)	520-1 501 (600-1)	580-1½ 561 (600-1½)	660-2 641 (700-2)



CORPUS CHRISTI, TEXAS 27°42'N-97°17'W CORPUS CHRISTI NAS (TRUAX FLD) (KNGP)

Amdt 1 16JUL20

# VOR/DME or TACAN Y RWY 31L

SC-3, 31 DEC 2020 to 28 JAN 2021

SC-3, 31 DEC 2020 to 28 JAN 2021