

TACAN Z RWY 31L

TACAN NGP Chan 87	APCH CRS 291°	Rwy Idg 8002 TDZE 18 Arpt Elev 19
-----------------------------	-------------------------	--

AL-98 [USN]

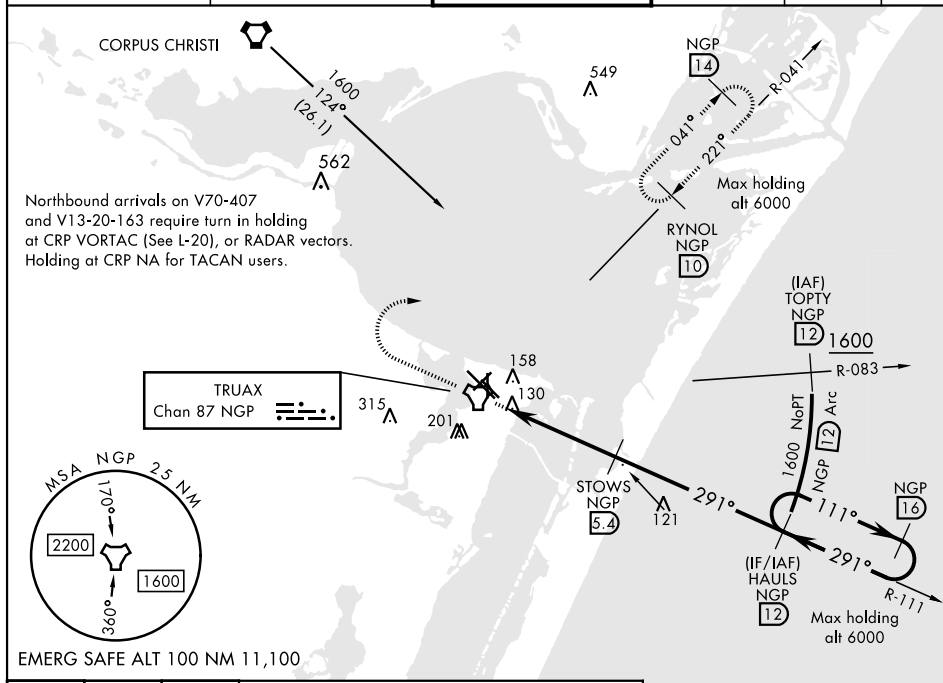
CORPUS CHRISTI NAS (TRUAX FLD) (KNGP)





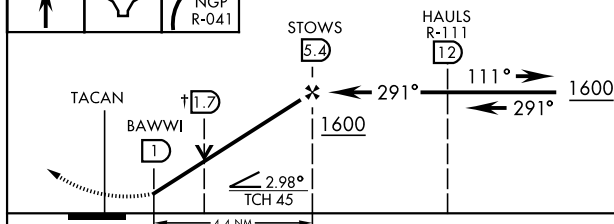
When local altimeter setting not received,
use Corpus Christi altimeter setting.

MISSED APPROACH: Climb to 1600 direct NGP TACAN and turn right to intercept R-041 to RYNOL and hold.

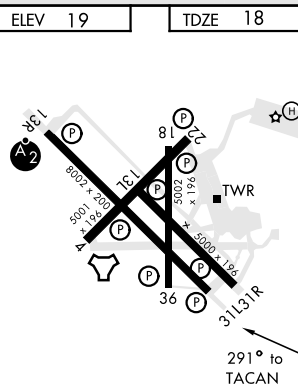
ATIS ★ 127.9 290.9	CORPUS CHRISTI APP CON 128.675 343.75	NAVY CORPUS TOWER ★ 134.85 0 340.2	GND CON 118.7 257.85	CLNC DEL 314.3	ASR/ PAR
-----------------------	--	---------------------------------------	-------------------------	-------------------	-------------



1600 ↑	NGP 	 NGP R-041	† VDP NA when using Corpus Christi allimeter setting
		STOWS	HAULS



CATEGORY	A	B	C	D
S-31L	420-1	402 (500-1)	420-1 $\frac{1}{8}$	402 (500-1 $\frac{1}{8}$)
C CIRCLING	480-1	461 (500-1)	540-1 $\frac{1}{2}$ 521 (600-1 $\frac{1}{2}$)	620-2 601 (700-2)
CORPUS CHRISTI ALTIMETER SETTING				
S-31L	460-1	442 (500-1)	460-1 $\frac{3}{8}$	442 (500-1 $\frac{3}{8}$)
C CIRCLING	500-1 481 (500-1)	520-1 501 (600-1)	580-1 $\frac{1}{2}$ 561 (600-1 $\frac{1}{2}$)	660-2 641 (700-2)



CORPUS CHRISTI, TEXAS

27°42'N-97°17'W

CORPUS CHRISTI NAS (TRUAX FLD) (KNGP)

Amdt 1 16JUL20

TACAN Z RWY 31L

SC-3, 31 DEC 2020 to 28 JAN 2021