

TACAN X RWY 31L

TACAN	NGP	APCH CRS	Rwy Idg
Chan 87	291°	TDZE	8002
		Arpt Elev	18
			19

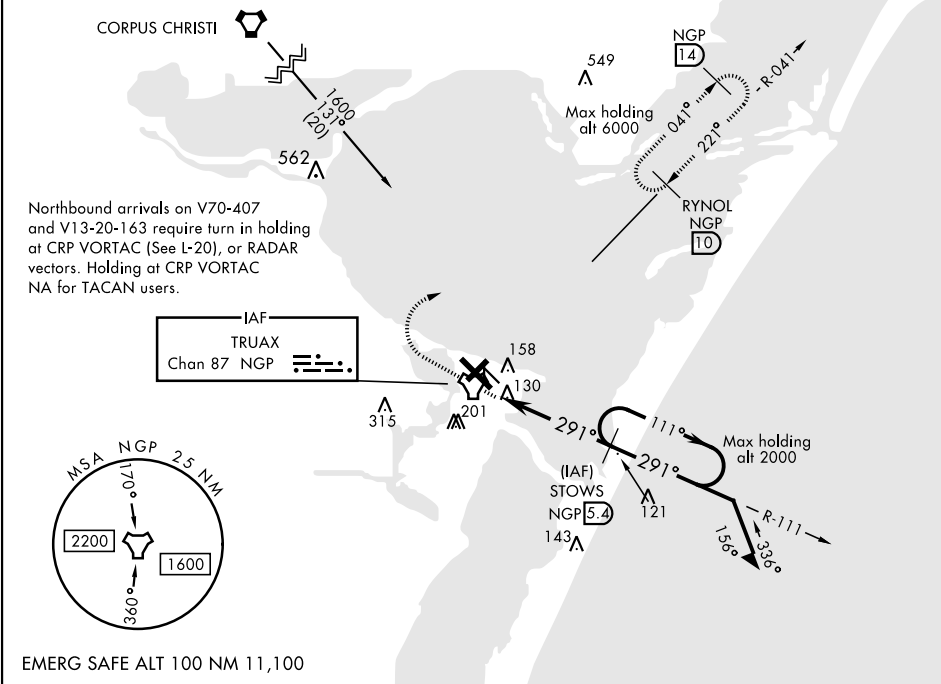
AL-98 [USN]

CORPUS CHRISTI NAS (TRUAX FLD) (KNGP)

When local altimeter setting not received, use Corpus Christi altimeter setting.

MISSED APPROACH: Climb to 1600 direct NGP TACAN and turn right to intercept R-041 and hold.

ATIS ★ 127.9 290.9	CORPUS CHRISTI APP CON 128.675 343.75	NAVY CORPUS TOWER ★ 134.85 340.2	GND CON 118.7 257.85	CLNC DEL 314.3	ASR/ PAR
-----------------------	--	-------------------------------------	-------------------------	-------------------	-------------



* VDP NA when using Corpus Christi altimeter setting.

TACAN

1600

111°

STOWS 5.4

BAWWI 1.7

2.98°

TCH 45

4.4 NMA

Remain within 10 NM of STOWS

1600

291°

1600

CATEGORY	A	B	C	D
S-31L	420-1 402 (500-1)		420-1½ 402 (500-1½)	
CIRCLING	480-1 461 (500-1)		540-1½ 521 (600-1½)	620-2 601 (700-2)
CORPUS CHRISTI ALTIMETER SETTING				
S-31L	460-1 442 (500-1)		460-1½ 442 (500-1½)	
CIRCLING	500-1 481 (500-1)	520-1 501 (600-1)	580-1½ 561 (600-1½)	660-2 641 (700-2)

ELEV 19 TDZE 18

NGP

NGP R-041

HIRL Rwy 4-22, 13R-31L

HIRL Rwy 13L-31R, 18-36

REIL Rwy 4-22, 13L-31R, 18-36, 31L

FAF to MAP 4.4 NM

Knots	60	90	120	150	180
Min:Sec	4:24	2:56	2:12	1:46	1:28

TACAN X RWY 31L

SC-3, 31 DEC 2020 to 28 JAN 2021

SC-3, 31 DEC 2020 to 28 JAN 2021