

TACAN RWY 18

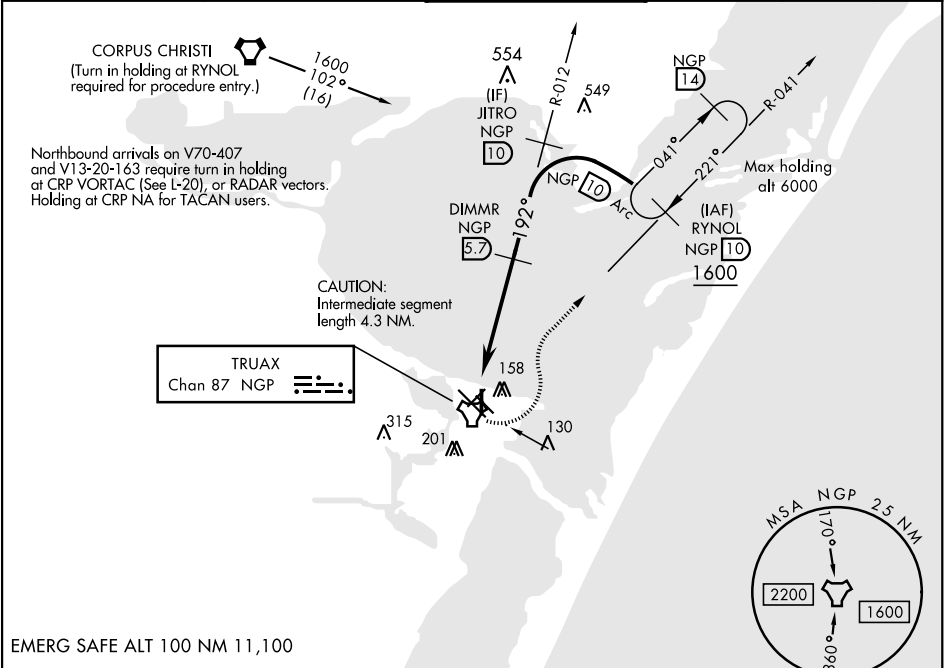
TACAN	NGP	APCH CRS	Rwy Idg	5002
Chan 87		192°	TDZE	19
			Arpt Elev	19

AL-98 [USN]

CORPUS CHRISTI NAS (TRUAX FLD) (KNGP)

When local altimeter setting not received, use Corpus Christi altimeter setting.	MISSED APPROACH: Climb to 1600 direct NGP TACAN and turn left to intercept R-041 to RYNOL and hold.
--	---

ATIS ★ 127.9 290.9	CORPUS CHRISTI APP CON 128.675 343.75	NAVY CORPUS TOWER ★ 134.85 340.2	GND CON 118.7 257.85	CLNC DEL 314.3	ASR/ PAR
-----------------------	--	-------------------------------------	-------------------------	-------------------	-------------



EMERG SAFE ALT 100 NM 11,100

1600

NGP

NGP

R-041

†VDP NA when using Corpus Christi altimeter setting.

TACAN

AHLAB

1.3

†1.8

↓

4.4 NM

→

DIMMR

5.7

1600

←

192°

↑

JITRO

R-012

10

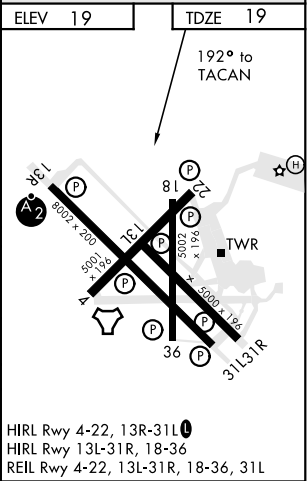
1600

←

2.97°

TCH 51

CATEGORY	A	B	C	D
S-18	360-1	341	(400-1)	
CIRCLING	480-1	461 (500-1)	540-1½ 521 (600-1½)	620-2 601 (700-2)
CORPUS CHRISTI ALTIMETER SETTING				
S-18	400-1	381 (400-1)	400-1½ 381 (400-1½)	
CIRCLING	500-1 481 (500-1)	520-1 501 (600-1)	580-1½ 561 (600-1½)	660-2 641 (700-2)



TACAN RWY 18

SC-3, 31 DEC 2020 to 28 JAN 2021

SC-3, 31 DEC 2020 to 28 JAN 2021