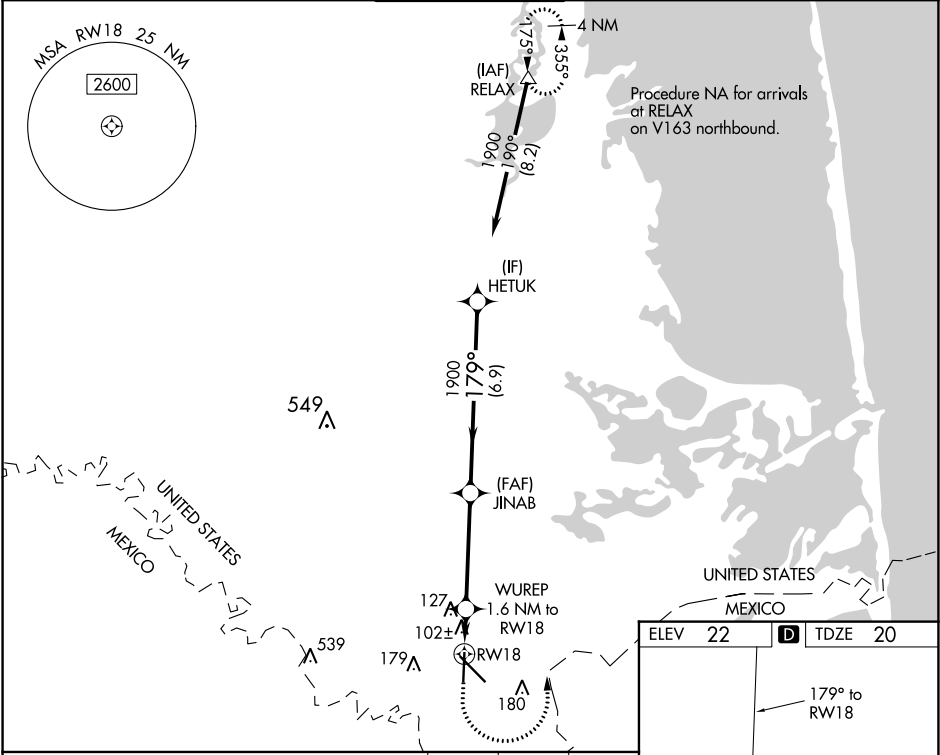


WAAS CH 93739 W18A	APP CRS 179°	Rwy Idg 5810 TDZE 20 Apt Elev 22
--	------------------------	---

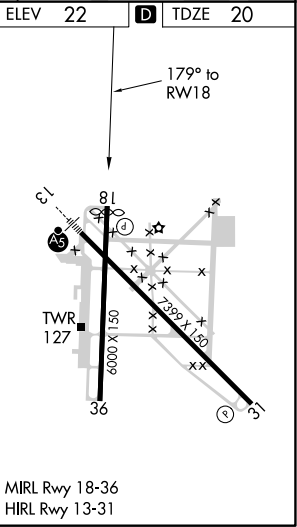
RNAV (GPS) RWY 18
BROWNSVILLE/SOUTH PADRE ISLAND INTL (BRO)

RNP APCH. RADAR required.	MISSED APPROACH: Climb to 500 then climbing left turn to 1900 direct RELAX and hold.
▼ Rwy 18 helicopter visibility reduction below 3/4 SM NA. When local altimeter not received, use Port Isabel altimeter setting and increase all MDA 40 feet; increase LNAV Cats C and D visibility 1/8 mile and Circling Cat D 1/4 mile.	

ATIS 128.55	VALLEY APP CON 119.5 257.6	BROWNSVILLE TOWER ★ 118.9 (CTAF) 239.3	GND CON 121.9	UNICOM 122.95
-----------------------	--------------------------------------	--	-------------------------	-------------------------



HETUK		JINAB		500	1900	RELAX
1900		179°		1900		WUREP 1.6 NM to RW18
		3.00°		TCH 50		560
6.9 NM		4.2 NM		1.6 NM		
CATEGORY	A	B	C	D		
LP MDA	360-1		340 (400-1)			
LNAV MDA	380-1		360 (400-1)			
CIRCLING	440-1 418 (500-1)	540-1 518 (600-1)	540-1½ 518 (600-1½)	680-2 658 (700-2)		



SC-3, 31 DEC 2020 to 28 JAN 2021

SC-3, 31 DEC 2020 to 28 JAN 2021