

LOC/DME I-BRO	APP CRS	Rwy Idg	7399
110.3	132°	TDZE	19
Chan 40		Apt Elev	22

ILS or LOC RWY 13
BROWNSVILLE/SOUTH PADRE ISLAND INTL (BRO)

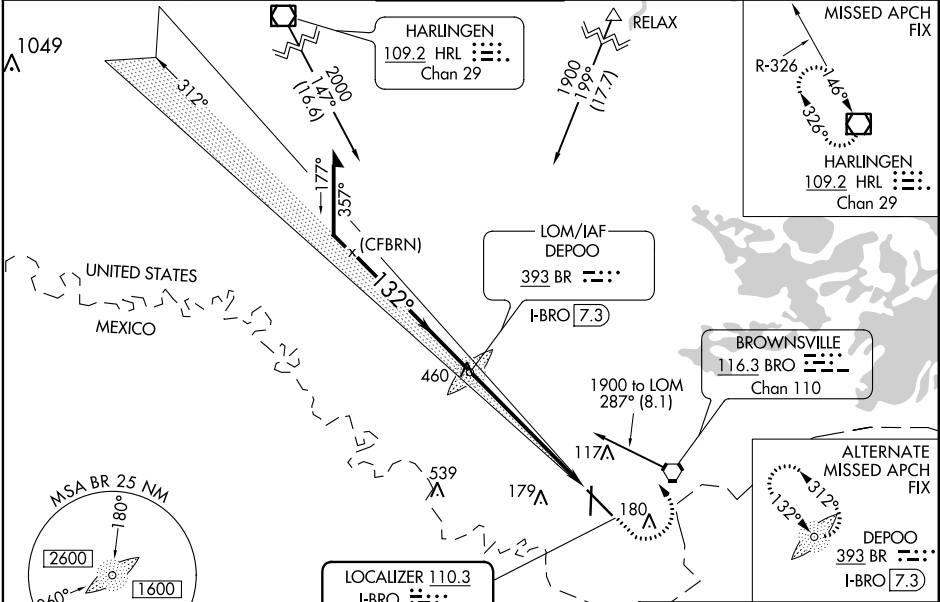
ADF or RADAR required.

⚠ VDP NA when using Port Isabel altimeter setting. For inop ALS increase S-LOC 13 Cats C and D visibility to 1½ miles. When local altimeter setting not received, use Port Isabel altimeter setting and increase DA to 307 feet and all MDA 40 feet. S-LOC 13 Cat C and D visibility to RVR 5500, Circling Cat D visibility to 2¼ miles. For inop ALS when using Port Isabel altimeter setting increase S-LOC 13 Cats C/D visibility to 1½ miles.

MALSR

MISSED APPROACH:
Climb to 700 then climbing left turn to 2000 direct HRL VOR/DME and hold.

ATIS 128.55	VALLEY APP CON 119.5 257.6	BROWNSVILLE TOWER ★ 118.9 (CTAF) 239.3	GND CON 121.9	UNICOM 122.95
----------------	-------------------------------	---	------------------	------------------



Remain within 10 NM

DEPOO LOM I-BRO 7.3

1900 312°

132°

1848

1900

GS 2.75° TCH 58

4.6 NM 1.4 NM

700 2000 HRL

*I-BRO 2.8 I-BRO 1.4 *LOC only.

CATEGORY	A	B	C	D
S-ILS 13	269/24		250 (300-½)	
S-LOC 13	480/24	461 (500-½)	480/50 461 (500-1)	
CIRCLING	480-1 458 (500-1)	540-1 518 (600-1)	540-1½ 518 (600-1½)	680-2 658 (700-2)

MIRL Rwy 18-36
HIRL Rwy 13-31

FAF to MAP 6 NM

Knots	60	90	120	150	180
Min:Sec	6:00	4:00	3:00	2:24	2:00