

WAAS CH <b>41250</b> <b>W18A</b>	APP CRS <b>177°</b>	Rwy Idg <b>6064</b> TDZE <b>1711</b> Apt Elev <b>1711</b>
--	------------------------	---

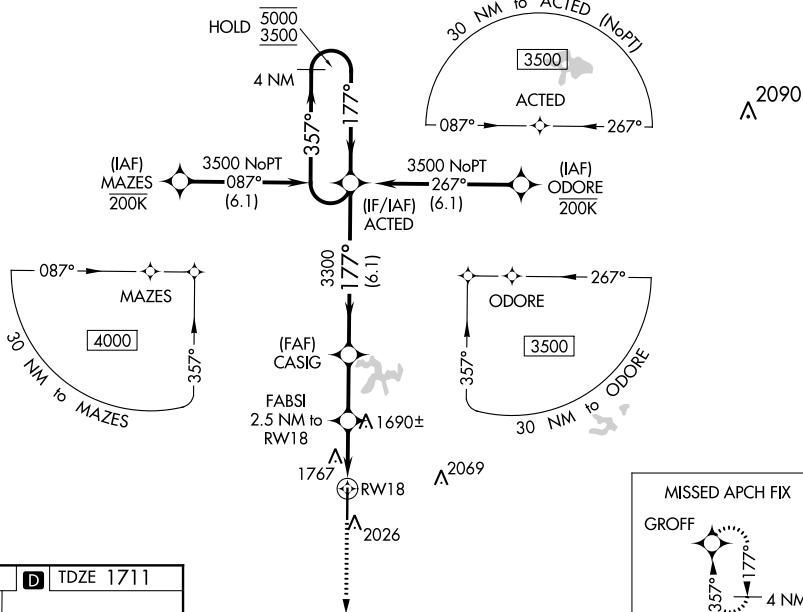
RNAV (GPS) Y RWY 18  
GREGORY M. SIMMONS MEMORIAL (GZN)

RNP APCH

Circling NA east of Rwy 18-36. Baro-VNAV and VDP NA when using Breckenridge altimeter setting. For uncompensated Baro-VNAV systems, LNAV/VNAV NA below -18°C or above 54°C. When local altimeter setting not received, use Breckenridge altimeter setting: increase all DAs 111 feet and visibility all Cats to 1¼ SM; increase all MDAs 120 feet and LNAV Cat C visibility to 1¾ SM. Rwy 18 helicopter visibility reduction below ¾ SM NA.

**MISSED APPROACH:**  
Climb to 3600 direct  
GROFF and hold

AWOS-3PT <b>118.0</b>	ABILENE APP CON <b>125.0 338.3</b>	CTAF <b>122.9</b>
--------------------------	---------------------------------------	----------------------



ELEV 1711	<b>D</b>	TDZE 1711
-----------	----------	-----------

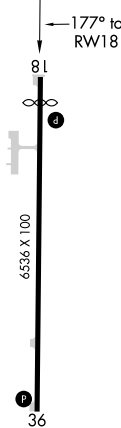
MIRL Rwy 18-36 **L**

Diagram illustrating a flight profile for a 4 NM Holding Pattern. The profile starts at 3600 feet, descends to 3300 feet, and then levels off. Key points include CASIG at 3300 feet, ACTED at 3300 feet, and a 4 NM Holding Pattern. The profile includes a 1 NM segment, a 1.5 NM segment, and a 2.4 NM segment. The total distance is 6.1 NM. The profile is labeled with 3600, GROFF, CASIG, ACTED, 3300, 2540\*, 3300, 357°, 177°, 5000, 3500, GP 3.00°, TCH 45, and 4 NM Holding Pattern.