

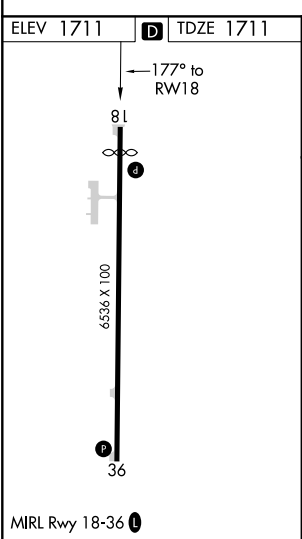
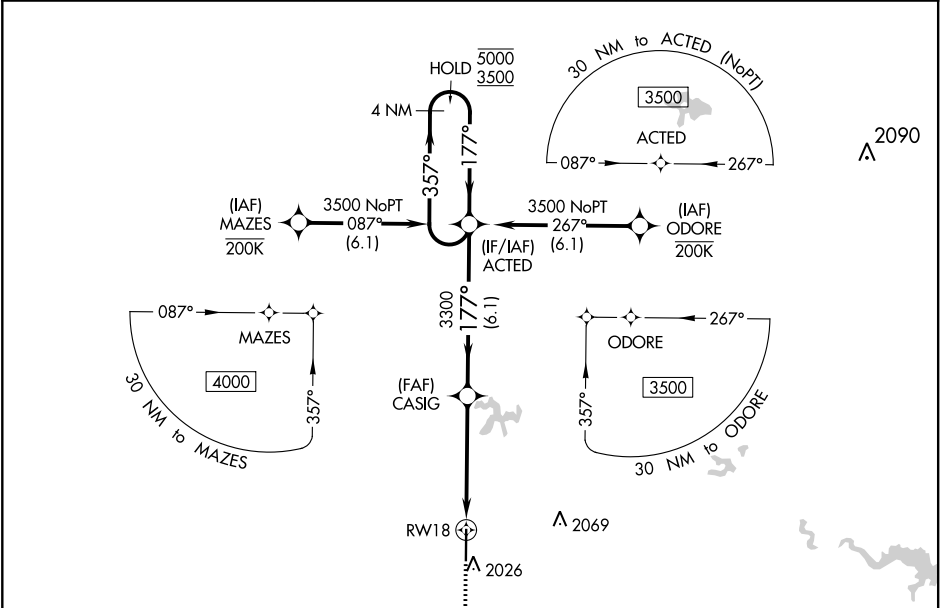
APP CRS	Rwy Idg	<b>6064</b>
<b>177°</b>	TDZE	<b>1711</b>
	Apt Elev	<b>1711</b>




RNAV (RNP) Z RWY 18

GREGORY M SIMMONS MEMORIAL (GZN)

RNP AR APCH.	For uncompensated Baro-VNAV systems, procedure NA below -18°C or above 54°C. When local altimeter setting not received, procedure NA. Rwy 18 helicopter visibility reduction below ¾ SM NA. Procedure NA for aircraft with wingspan greater than 136 feet.	MISSED APPROACH: Climb to 3600 direct GROFF and hold.
--------------	---	---

AWOS-3PT <b>118.0</b>	ABILENE APP CON <b>125.0 338.3</b>	CTAF <b>122.9</b>
--------------------------	---------------------------------------	----------------------



				<div>MISSED APCH FIX</div> <div>GROFF</div>	
<div>3600</div> <div>↑</div>	<div>GROFF</div> <div></div>				
		<div>CASIG</div> <div>3300</div>		<div>ACTED</div> <div>4 NM Holding Pattern</div>	
<div>RW18</div> <div></div>		<div>3300</div> <div>177°</div>		<div>357° → 5000</div> <div>← 177° 3500</div>	
		<div>4.9 NM</div>		<div>GP 3.00°</div> <div>TCH 45</div>	
<div>CATEGORY</div>		<div>A</div>	<div>B</div>	<div>C</div>	<div>D</div>
<div>RNP 0.30 DA</div>		<div>2053-1½ 342 (400-1½)</div>			<div>NA</div>
<div>AUTHORIZATION REQUIRED</div>					

SC-2, 31 DEC 2020 to 28 JAN 2021

SC-2, 31 DEC 2020 to 28 JAN 2021