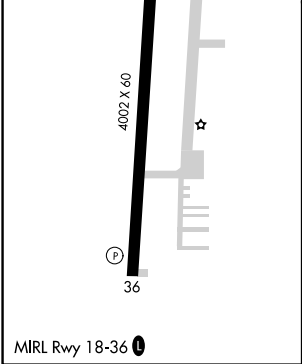
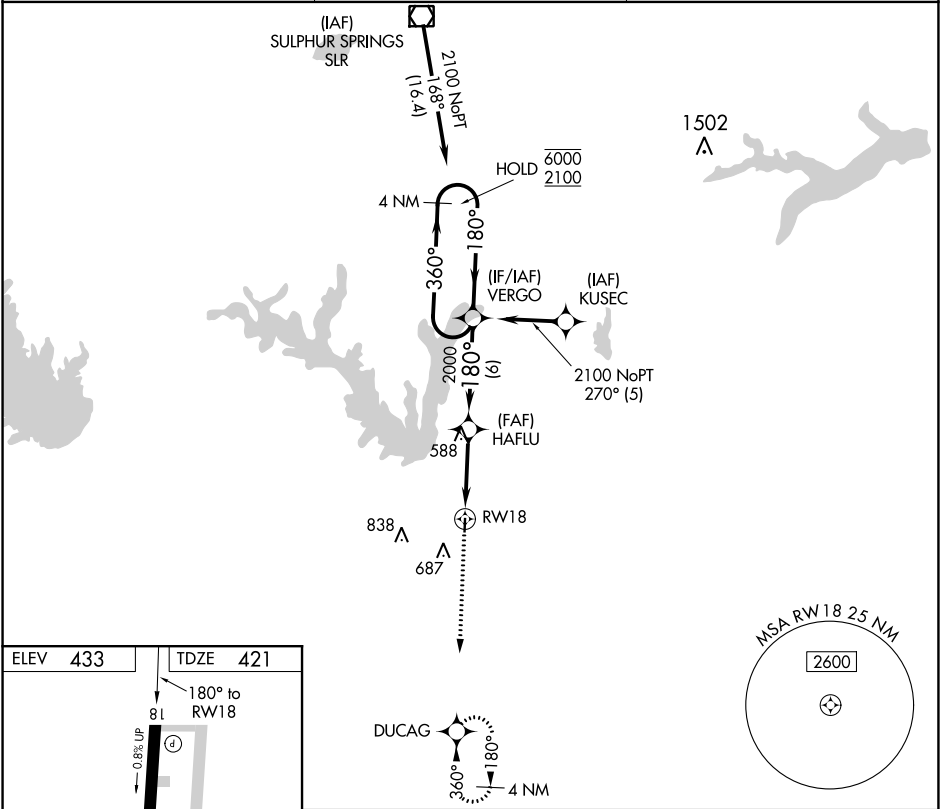


APP CRS	Rwy Idg	4002
180°	TDZE	421
	Apt Elev	433

RNAV (GPS) RWY 18
WOOD COUNTY-COLLINS FIELD (JDD)

RNP APCH.	MISSED APPROACH: Climb to 2200 direct DUCAG and hold.
▼ Circling Rwy 36 NA at night. ▲ Rwy 18 helicopter visibility reduction below ¾ SM NA.	

AWOS-3 118.9	LONGVIEW APP CON ★ 128.75 379.15	UNICOM 122.8 (CTAF) 0
-----------------	-------------------------------------	--------------------------



2200	DUCAG	VGSI and descent angles not coincident (VGSI Angle 3.00/TCH 30).		
		VERGO	4 NM Holding Pattern	
		HAFLU	360° → 6000 ← 180° 2100	
		RWY 18	1.2 NM to RWY 18 3.05° TCH 40	
			1.2 3.6 NM 6 NM	
CATEGORY	A	B	C	D
LNAV MDA	820-1 399 (400-1)		820-1 399 (400-1 1/8)	NA
CIRCLING	920-1 487 (500-1)	940-1 507 (600-1)	1000-1 567 (600-1 1/2)	NA

SC-2, 31 DEC 2020 to 28 JAN 2021

SC-2, 31 DEC 2020 to 28 JAN 2021