

WAAS CH <b>61216</b> <b>W20A</b>	APP CRS <b>200°</b>	Rwy Idg <b>6100</b> TDZE <b>3786</b> Apt Elev <b>3788</b>
--	------------------------	---

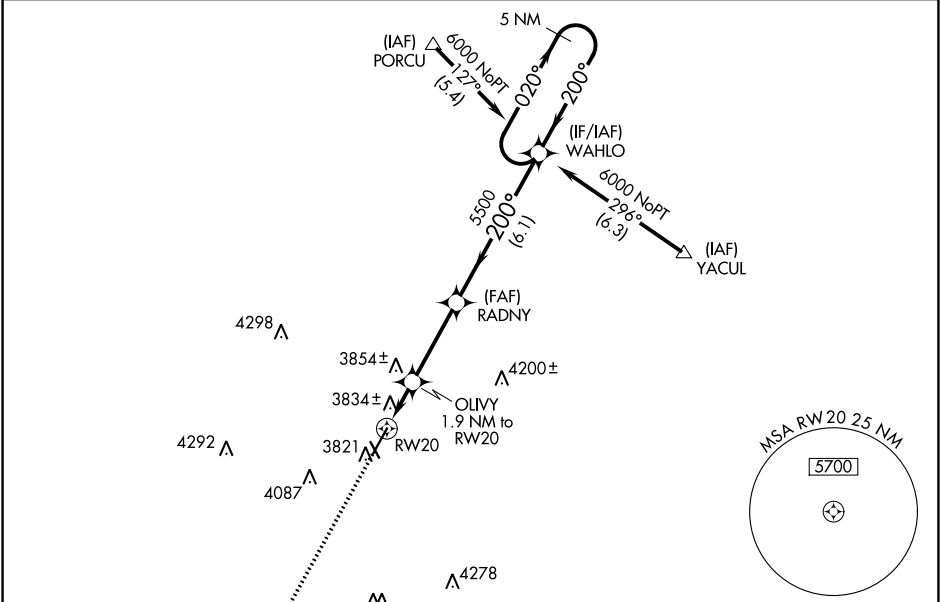
RNAV (GPS) RWY 20  
HEREFORD MUNI (HR.X)

RNP APCH.

▼ For uncompensated Baro-VNAV systems, LNAV/VNAV NA below -22°C (-7°F) or above 41°C (105°F).  
▲ When local altimeter setting not received, use Amarillo Intl altimeter setting and increase all DA 112 feet and all MDA 120 feet, increase LPV and LNAV/VNAV visibility all Cats and Circling Cats C/D visibilities ¼ mile, and increase LNAV Cats C/D visibilities ½ mile. Baro-VNAV NA when using Amarillo Intl altimeter setting. VDP NA with Amarillo Intl altimeter setting.

MISSED APPROACH:  
Climb to 6000 direct LEMGE and hold.

AWOS-3 <b>118.05</b>	AMARILLO APP CON* <b>119.5 307.0</b>	UNICOM <b>122.8 (CTAF) 0</b>
-------------------------	---	---------------------------------



ELEV 3788 | TDZE 3786

CATEGORY	A	B	C	D
LPV DA	3986-3/4 200 (200-3/4)			
LNAV/DA VNAV	4120-1 1/4 334 (400-1 1/4)			
LNAV MDA	4220-1	434 (500-1)	4220-1 1/4	434 (500-1 1/4)
CIRCLING	4280-1	492 (500-1)	4280-1 1/2	4340-2
			492 (500-1 1/2)	552 (600-2)

6000 | LEMGE