

WAAS CH <b>78401</b> <b>W36A</b>	APP CRS <b>358°</b>	Rwy Idg <b>6000</b> TDZE <b>443</b> Apt Elev <b>447</b>
--	------------------------	---

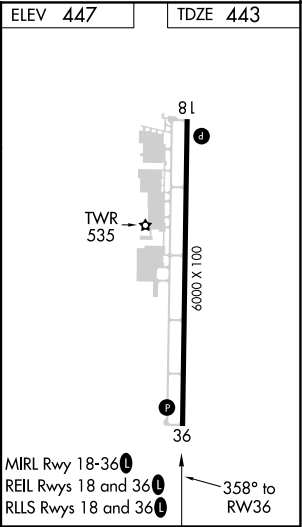
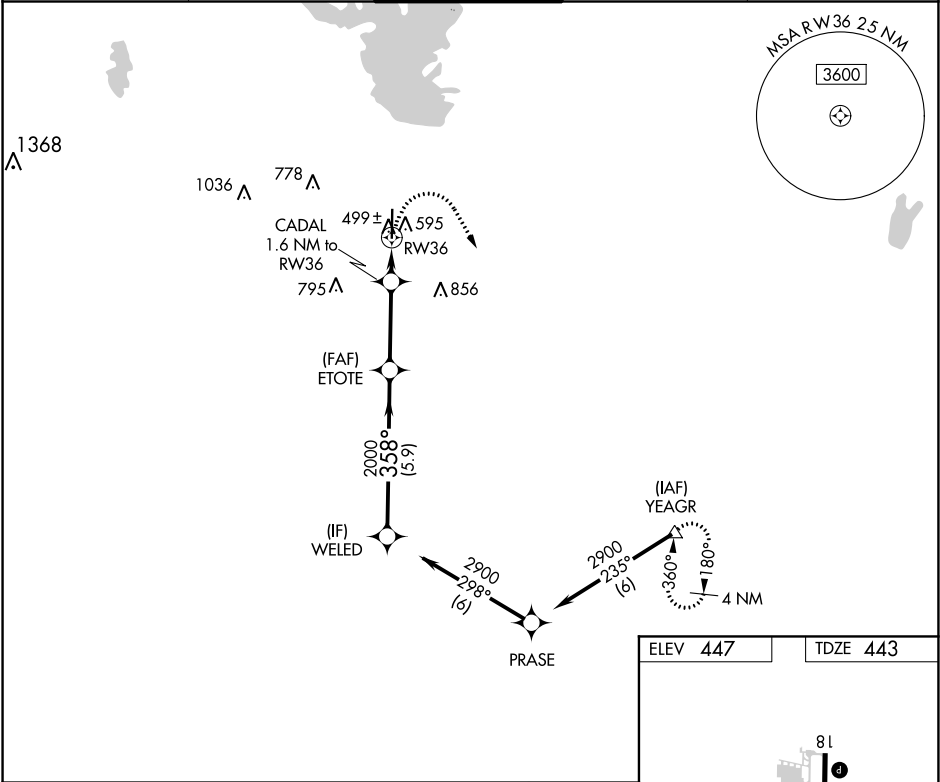
RNAV (GPS) RWY 36





MESQUITE METRO (HQQZ)

DME/DME RNP-0.3 NA. When local altimeter setting not received, use Dallas Love Field altimeter setting and increase all DA/MDA 60 feet. Increase LPV all Cats visibility to 1 mile, increase Circling Cat C visibility to 2¼ mile. VDP NA when using Dallas Love Field altimeter setting.

MISSED APPROACH:  
Climbing right turn to 3000  
direct YEAGR and hold.

AWOS-3 <b>118.175</b>	REGIONAL APP CON <b>125.2 343.65</b>	MESQUITE TOWER★ <b>120.3</b> (CTAF) <b>0</b>	GND CON <b>118.85</b>	UNICOM <b>123.05</b>
--------------------------	---	---	--------------------------	-------------------------



WELED		ETOTE		CADAL 1.6 NM to RW36		3000 	YEAGR 
2900		358°		2000		*LNAV only.	
GP 3.00° TCH 42		2000		*980		*0.9 NM to RW36 RW36 	
		5.9 NM		3.2 NM		0.7 NM 0.9 NM	
CATEGORY	A	B	C	D			
LPV DA	693-7/8		250 (300-7/8)		NA		
LNAV MDA	760-1		317 (400-1)		NA		
 CIRCLING	960-1		513 (600-1)		1160-2 713 (800-2)		NA