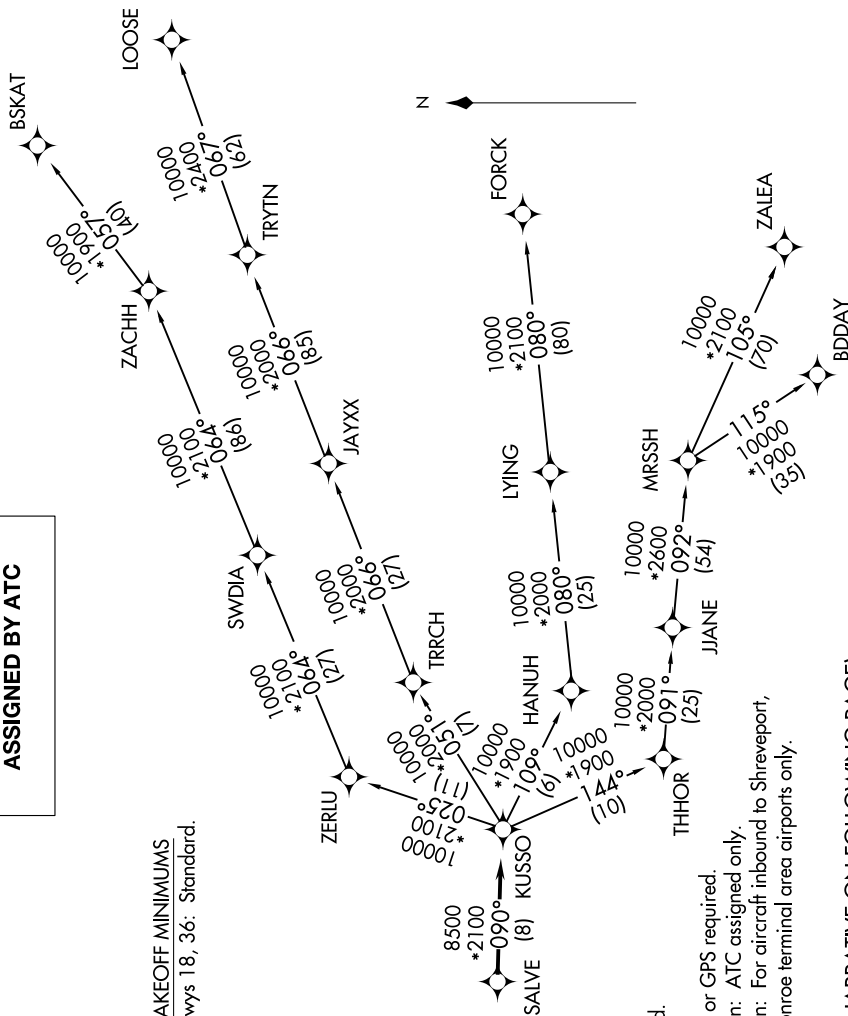


MESQUITE, TEXAS  
MESQUITE METRO (HQZ)

**TOP ALTITUDE:  
ASSIGNED BY ATC**

TAKEOFF MINIMUMS  
Rwys 18, 36: Standard.



NOTE: RADAR required.  
NOTE: RNAV 1.  
NOTE: DME/DME/IRU or GPS required.  
NOTE: BDDAY transition: ATC assigned only.  
NOTE: MRSSH transition: For aircraft inbound to Shreveport, Jackson and Monroe terminal area airports only.

(NARRATIVE ON FOLLOWING PAGE)

NOTE: Chart not to scale.