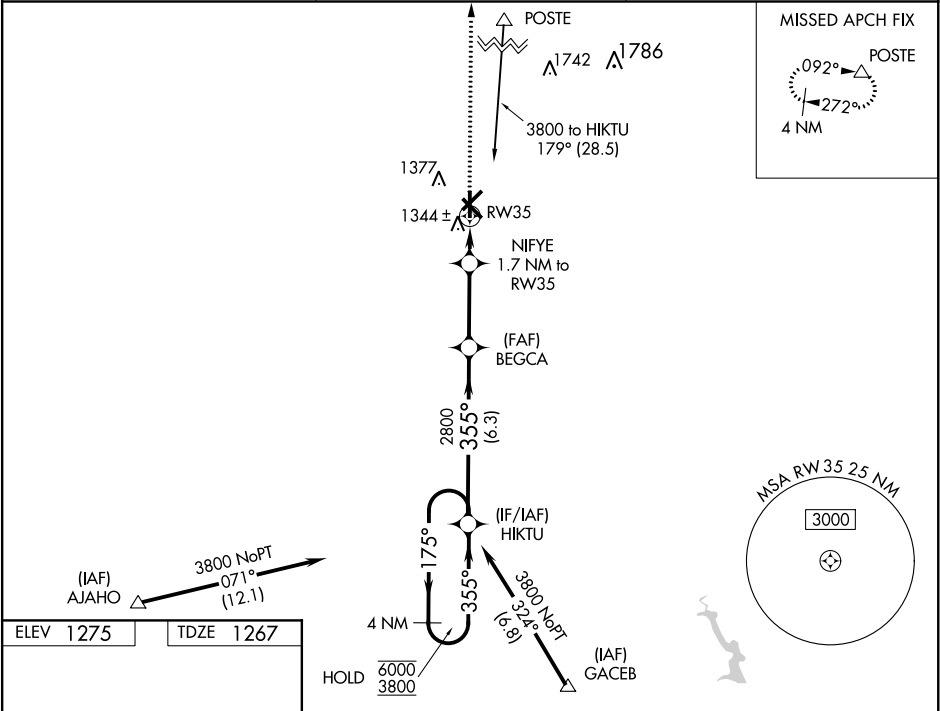


WAAS CH 53331 W35A	APP CRS 355°	Rwy Idg TDZE 1267 Apt Elev 1275
--	------------------------	---

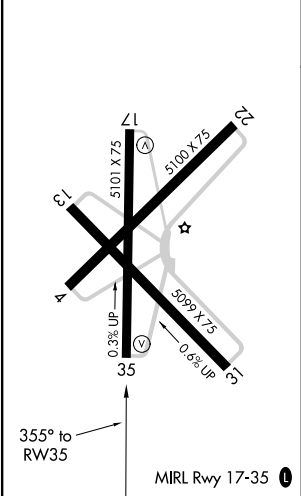
RNAV (GPS) RWY 35
OLNEY MUNI (ONY)

RNP APCH. Baro-VNAV NA. Use Graham altimeter setting; when not received, use Kickapoo Downtown altimeter setting and increase all DA 52 feet and all MDA 60 feet: increase LNAV/VNAV all Cats visibility ¼ SM and LNAV Cat C visibility ¼ SM.	MISSED APPROACH: Climb to 1800 then climb to 5000 direct POSTE and hold.
--	---

RPH AWOS-3 118.025	FORT WORTH CENTER 133.5 350.35	UNICOM 122.8 (CTAF) 0
------------------------------	--	---------------------------------



ELEV 1275	TDZE 1267
-----------	-----------



1800	5000	POSTE	VGSI and RNAV glidepath not coincident (VGSI Angle 3.00/TCH 37).	4 NM Holding Pattern
*LNAV only	NIFYE 1.7 NM to RW35	BEGCA 2800	HIKTU	175° → 6000 ← 355° 3800
	RW35	*1840	2800	GP 3.00° TCH 40
	1.7 NM	3 NM	6.3 NM	
CATEGORY	A	B	C	D
LPV DA	1534-7/8	267 (300-7/8)		NA
LNAV/VNAV DA	1584-7/8	317 (400-1 1/8)		NA
LNAV MDA	1680-1	413 (500-1)	1680-1 1/8 413 (500-1 1/8)	NA
CIRCLING	1760-1	485 (500-1)	1760-1 1/2 485 (500-1 1/2)	NA

SC-2, 31 DEC 2020 to 28 JAN 2021

SC-2, 31 DEC 2020 to 28 JAN 2021