

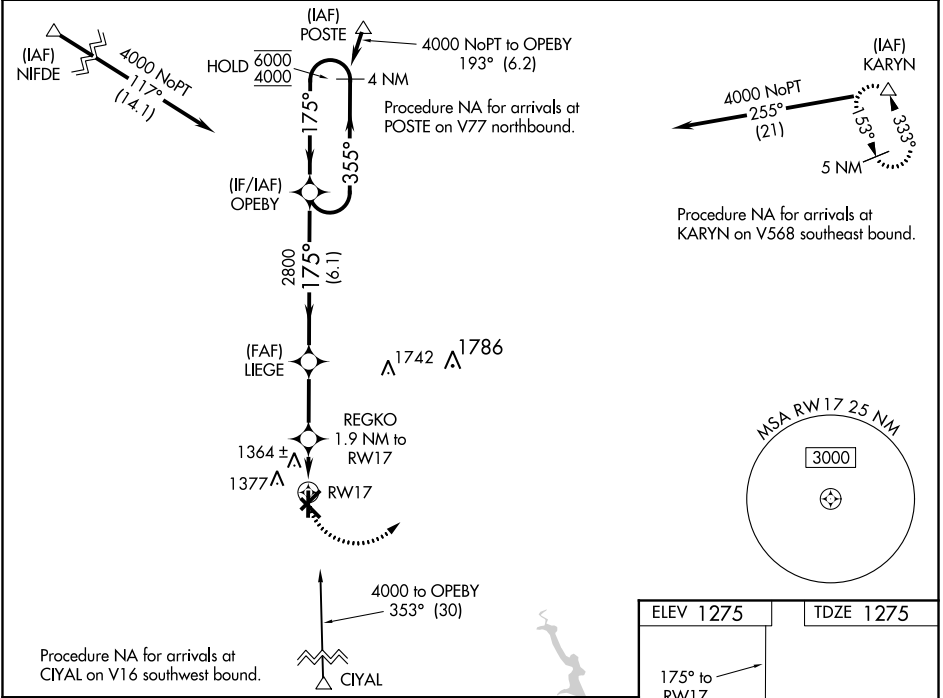
WAAS CH 9733Z W17A	APP CRS 175°	Rwy Idg TDZE 1275 Apt Elev 1275	5101
--	------------------------	---	-------------

RNAV (GPS) RWY 17

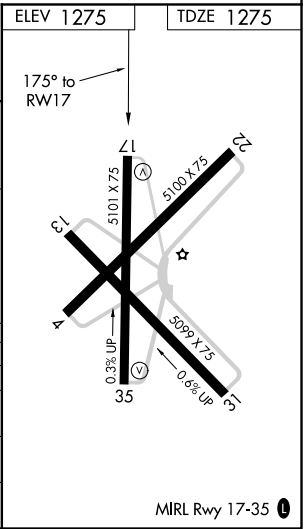
OLNEY MUNI (ONY)

RNP APCH.	Rwy 17 helicopter visibility reduction below ¾ SM NA. Baro-VNAV NA. Use Graham altimeter setting; when not received, use Kickapoo Downtown altimeter setting and increase all DA 52 feet all MDA 60 feet; increase LPV all Cats, LNAV/VNAV all Cats and LNAV Cat C visibility ½ SM.	MISSED APPROACH: Climb to 1800 then climbing left turn to 5000 direct KARYN and hold.
-----------	--	---

RPH AWOS-3 118.025	FORT WORTH CENTER 133.5 350.35	UNICOM 122.8 (CTAF) 0
------------------------------	--	---------------------------------



4 NM Holding Pattern				
VGSI and RNAV glidepath not coincident (VGSI Angle 3.00/TCH 29).				
OPEBY				
LIEGE				
REGKO 1.9 NM to RWY 17				
RWY 17				
GP 3.00° TCH 40				
6.1 NM 2.8 NM 1.9 NM				
CATEGORY	A	B	C	D
LPV DA	1592-7/8	317 (400-7/8)		NA
LNAV/VNAV DA	1592-7/8	317 (400-7/8)		NA
LNAV MDA	1700-1	425 (500-1)	1700-1¼ 425 (500-1¼)	NA
CIRCLING	1760-1	485 (500-1)	1760-1½ 485 (500-1½)	NA



SC-2, 31 DEC 2020 to 28 JAN 2021

SC-2, 31 DEC 2020 to 28 JAN 2021