

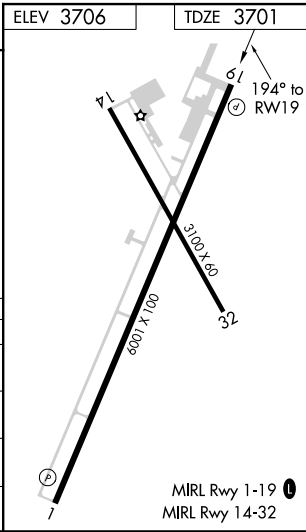
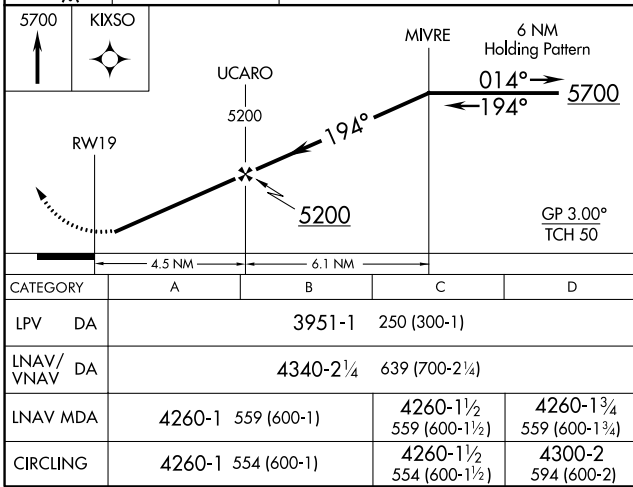
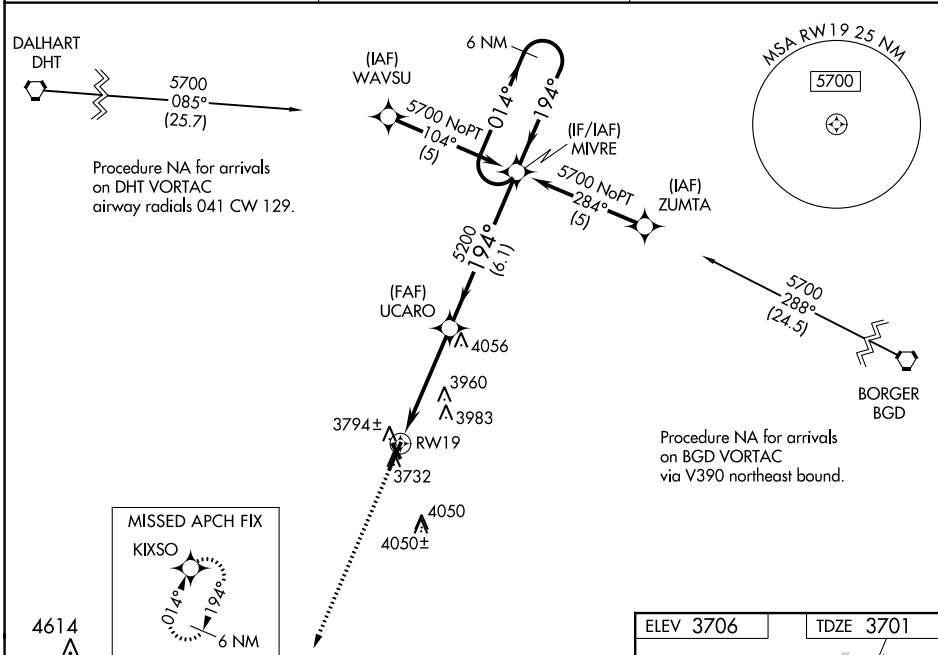
WAAS CH <b>69416</b> <b>W19A</b>	APP CRS <b>194°</b>	Rwy Idg TDZE Apt Elev <b>6001</b> <b>3701</b> <b>3706</b>
--	------------------------	--

**RNAV (GPS) RWY 19**  
MOORE COUNTY (DUX)

**⚠** Baro-VNAV NA when using Dalhart altimeter setting. For uncompensated Baro-VNAV systems, LNAV/VNAV NA below -22°C (-7°F) or above 41°C (105°F). DME/DME RNP-0.3 NA. Helicopter visibility reduction below ¾ SM NA. When local altimeter setting not received, use Dalhart altimeter setting and increase DA 104 feet and all MDA 120 feet, increase LPV all Cats, and Circling Cat D visibility ¼ mile, and LNAV/VNAV all Cats, LNAV Cats C/D and Circling Cat C visibility ½ mile. Night landing: Rwy 14, 32 NA.

**MISSED APPROACH:**  
Climb to 5700 direct to KIXSO and hold.

AWOS-3 <b>118.075</b>	ALBUQUERQUE CENTER <b>127.85 285.475</b>	UNICOM <b>122.8 (CTAF) 0</b>
--------------------------	---	---------------------------------



SC-2, 31 DEC 2020 to 28 JAN 2021

SC-2, 31 DEC 2020 to 28 JAN 2021