

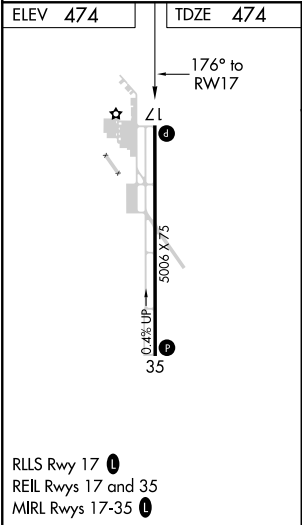
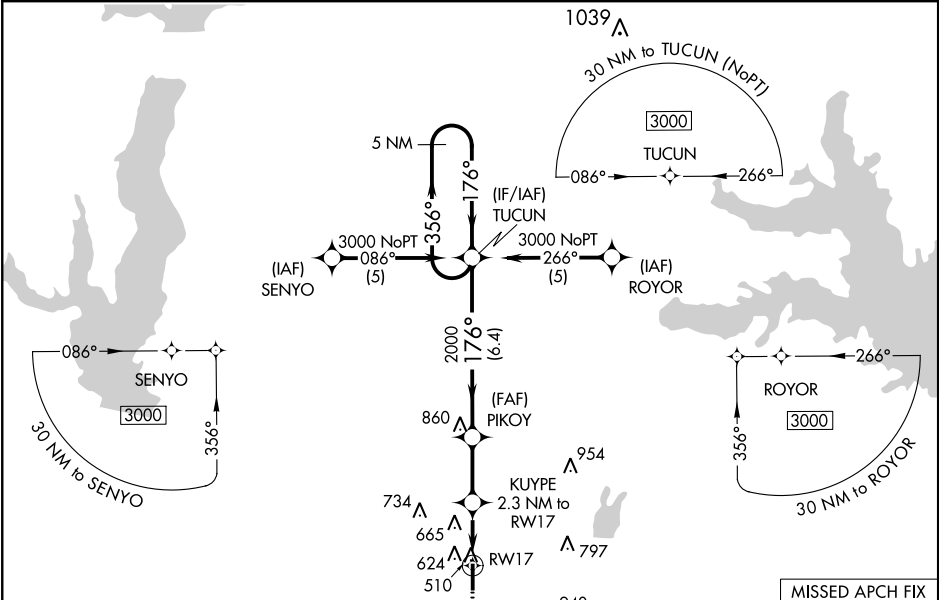
WAAS CH <b>77699</b> <b>W17A</b>	APP CRS <b>176°</b>	Rwy Idg TDZE <b>474</b> Apt Elev <b>474</b>
----------------------------------------	------------------------	---------------------------------------------------

RNAV (GPS) RWY 17  
TERRELL MUNI (TRL)

When local altimeter setting not received, use Dallas-Love Field altimeter setting and increase all DA 73 feet and all MDA 80 feet; increase LNAV/VNAV all Cats visibility to 2½ mile, LNAV Cat C to 1¾ mile and Circling Cat C to 1¾ mile. Baro-VNAV and VDP NA when using Dallas-Love Field altimeter setting. For uncompensated Baro-VNAV systems, LNAV/VNAV NA below -7°C (20°F) or above 54°C (130°F). DME/DME RNP-0.3 NA. Helicopter visibility reduction below ¾ SM NA.

MISSED APPROACH: Climb to 3000 direct OLEGE and hold.

ASOS <b>119.275</b>	FORT WORTH CENTER <b>132.025 360.75</b>	UNICOM <b>122.8 (CTAF) 0</b>
------------------------	--------------------------------------------	---------------------------------



3000	OLEGE	VGSi and RNAV glidepath not coincident (VGSi Angle 3.00/TCH 32). TUCUN		5 NM Holding Pattern
*LNAV only		KUYPE 2.3 NM to RW17	PIKOY	356° → 3000
*1.4 NM to RW17		1240	2000	← 176°
RWY 17		1.4	0.9	2.3 NM → 6.4 NM
CATEGORY	A	B	C	D
LPV DA	756-1		282 (300-1)	NA
LNAV/VNAV DA	1013-1¾		539 (600-1¾)	NA
LNAV MDA	960-1		486 (500-1)	960-1¾ 486 (500-1¾)
CIRCLING	1000-1 526 (600-1)	1020-1 546 (600-1)	1020-1½ 546 (600-1½)	NA